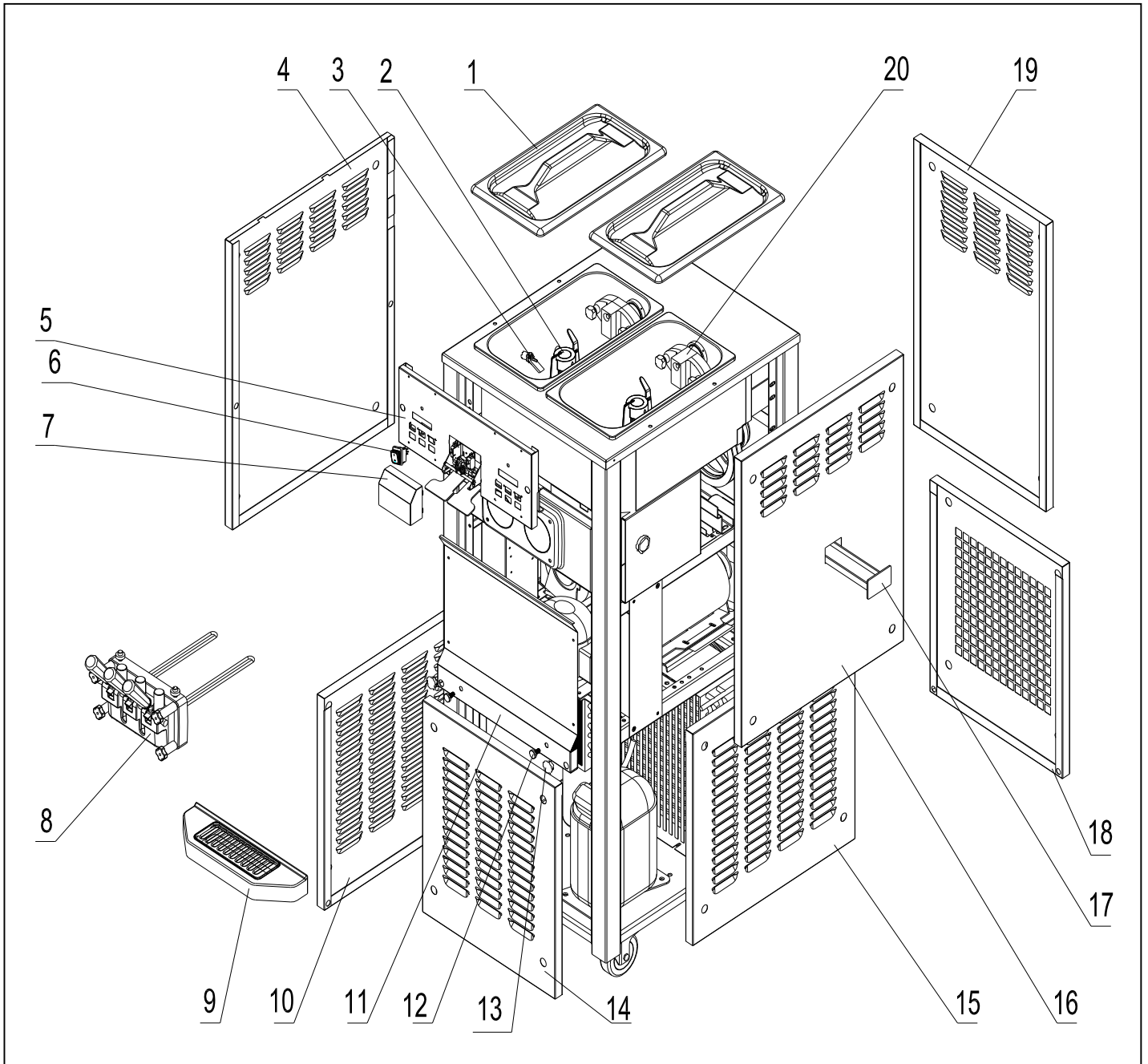
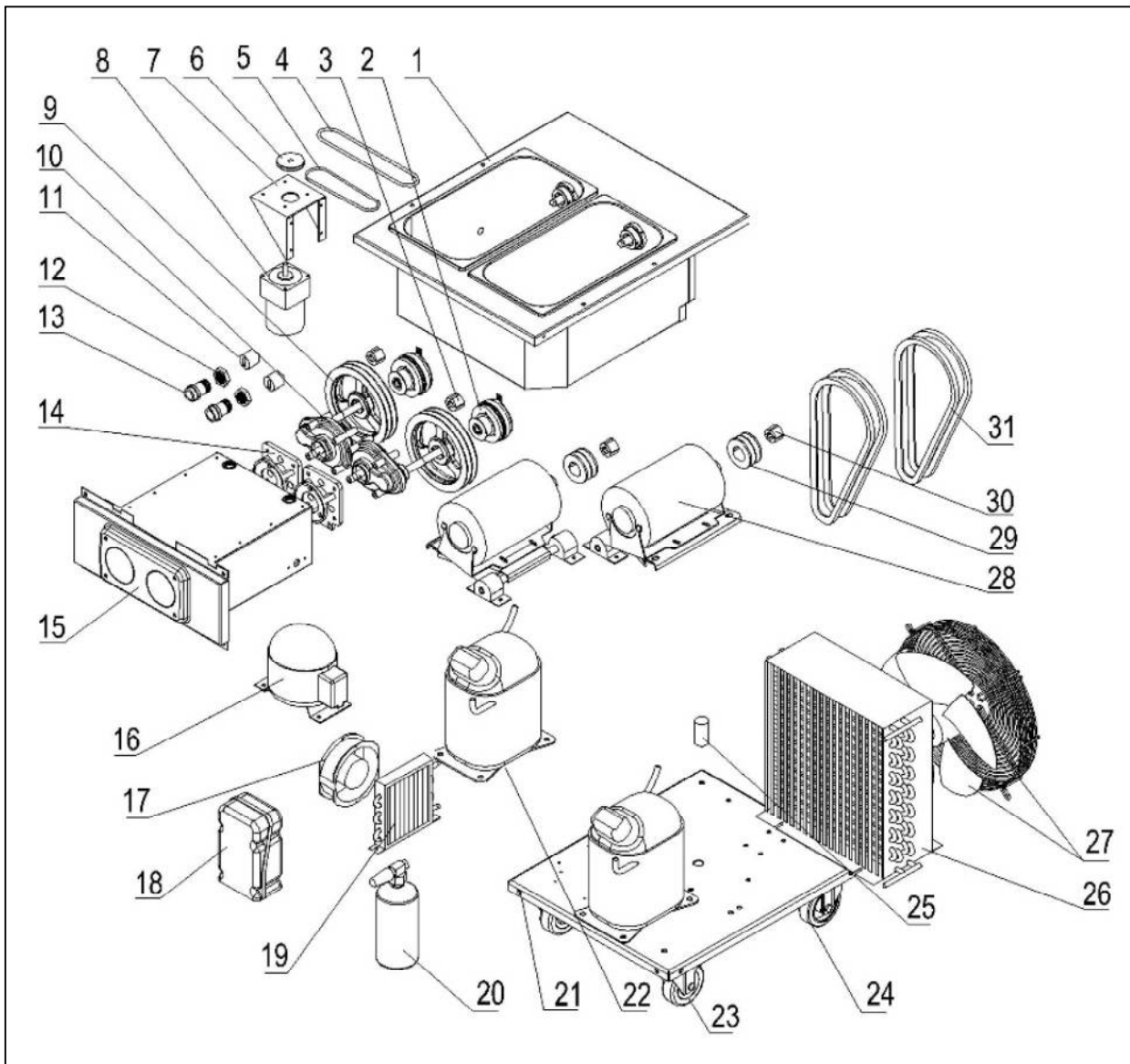


1. Final Assembly

1. Final Assembly

Item	Part Number	Description	QTY.
1	3.4.03.01.004	Top Cover – 378	2
2	2.1.1.23.0001	Blade – Agitator, STD	2
3	3.1.03.04.009	Mix Low Sensor	2
4	2.3.4.19.003	Panel -Upper Left, 378	1
5	2.3.4.07.008	Panel - Upper Front, 378	1
6	3.1.03.03.004	Power Switch, KCD1, 2-Position	2
7	3.4.07.07.004	Cover of Spigot Switch	1
8	2.1.1.15.0005	Dispensing Door Assembly – 378	1
9	3.4.04.01.003	Drip Tray – 378	1
10	2.3.4.22.003	Panel - Lower Left, 378	1
11	2.3.4.16.004	Panel - Middle Front, 378	1
12	3.6.39.004	Bolt – Drip Pan	2
13	3.4.07.01.001	Snapper	6
14	2.3.4.17.010	Panel - Lower Front, 378	1
15	2.3.4.22.003	Panel - Lower Right, 378	1
16	2.3.4.21.003	Panel - Upper Right, 378	1
17	3.4.04.02.001	Rear Drip Tray – 225	1
18	2.3.4.15.003	Panel - Lower Rear, 378	1
19	2.3.4.14.003	Panel - Upper Rear, 378	1
20	2.1.1.13.0001	Air Pump Assembly	2

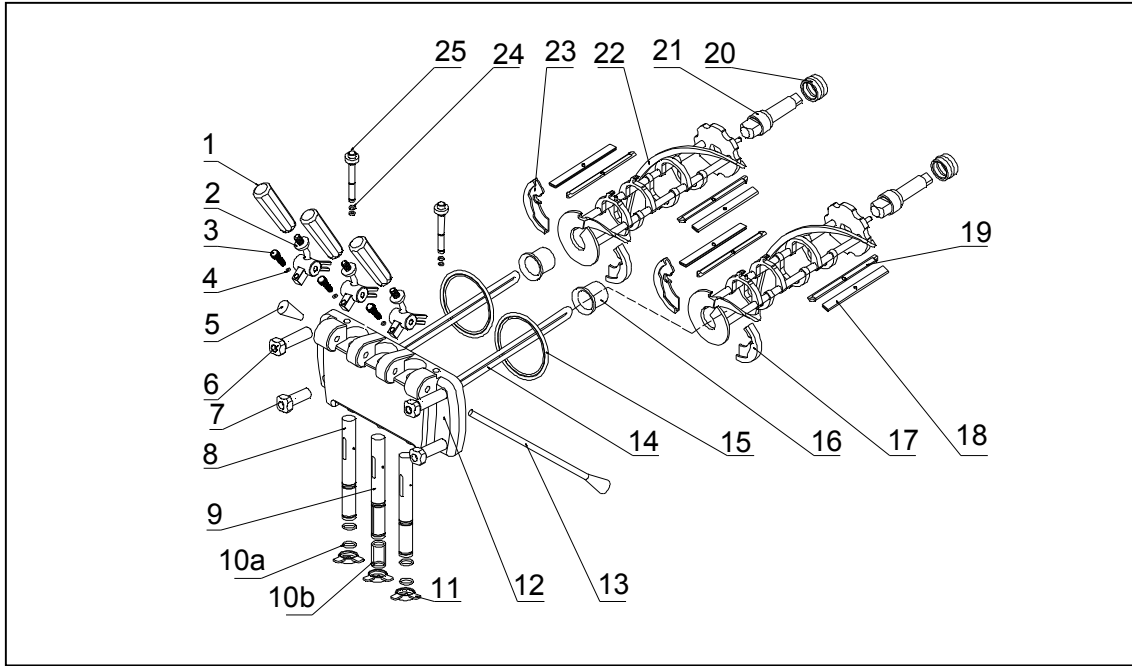
2. Interior



2. Interior

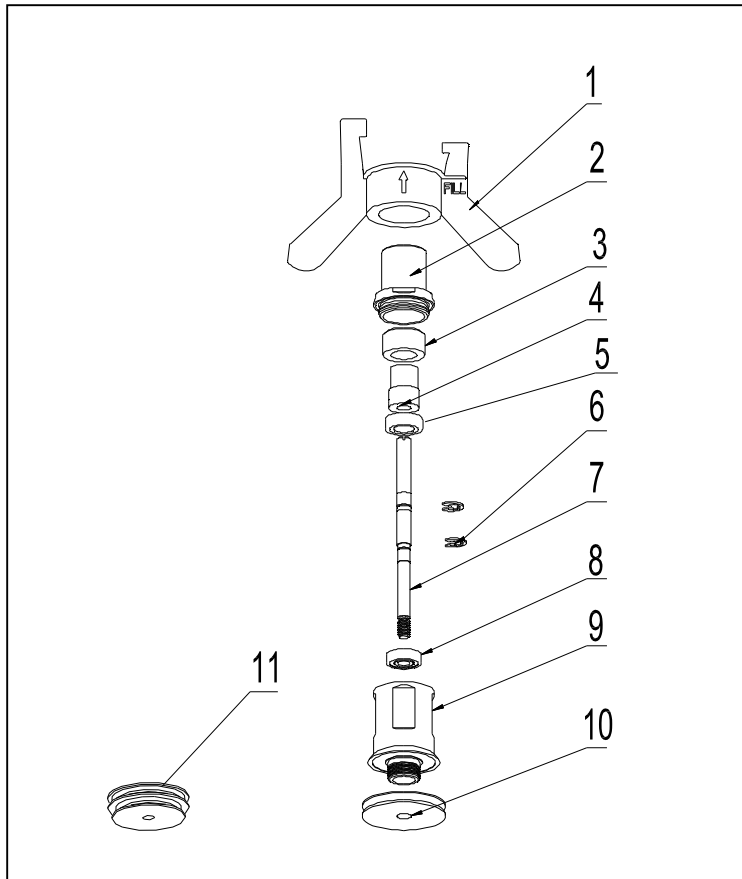
Item	Part Number	Description	QTY.
1	2.1.1.05.0031	Hopper Assembly, 378A	1
2	3.1.01.06.001	Micro-Clutch, MCS-1.2	2
3	3.3.04.01.007	Bushing – Gear Box Pulley	2
4	2.1.4.08.021	Belt – Agitator, Between Hoppers, 630mm	1
5	2.1.4.08.002	Belt – Agitator Motor to Double Pulley, 360mm	1
6	3.3.04.04.008	Pulley – Agitator Motor, 34mm.	1
7	2.3.4.45.007	Bracket – Agitator Motor – 248-378	1
8	3.3.01.01.001	Agitator Motor YN80-25, 220V,1250/1500RPM	1
9	3.3.04.02.008	Pulley – Gear Box	2
10	3.3.02.01.007	Gear Box, Single-Long with Micro Clutch.	2
11	3.3.02.04.002	Coupling – Drive – 378	2
12	3.3.02.02.010	Nut – Copper Bearing	2
13	3.3.02.02.002	Rear Shell Bearing – Cylinder, 378	2
14	2.1.3.15.0003	Mount – Gear Box, 378	2
15	2.1.1.06.0045	Cylinder Assembly, 378	1
16	3.2.01.01.002	Hopper Compressor – B38h	1
17	3.2.03.01.001	Hopper Condenser Fan Motor –MAXAIR-15050	1
18	3.2.01.04.004	Accessories, Compressor - CAJ2464	1
19	3.2.02.01.001	Condenser – Hopper, 0.7 m ²	1
20	3.2.04.08.001	Liquid Receiver \varnothing 76×280	2
21	2.2.4.01.0011	Chassis, 378	1
22	3.2.01.02.005	Compressor - CAJ2464Z-TH380V50HZ	2
23	3.3.05.02.002	Caster- Swivel 125×32	4
24	3.3.05.01.002	Caster - Fixed 125×32	2
25	3.2.03.04.001-1	Capacitor - Fan Motor, CBB60, 4uF/450VAC	1
26	3.2.02.01.009	Main Condenser, 15 m ² Single.	1
27	3.2.03.04.001-1	Fan Motor Cover	1
28	3.3.01.04.005	Motor, 380V/50Hz/3Ph	2
29	3.3.04.02.001	Pulley – Motor, SPA63×2	2
30	3.3.04.01.005	Bushing – Motor Pulley, 1008-16.	2
31	3.3.03.01.014	Belt – Beater Motor, V Belt, XPA1080.	4

3. Dispensing Door and Beater Assembly



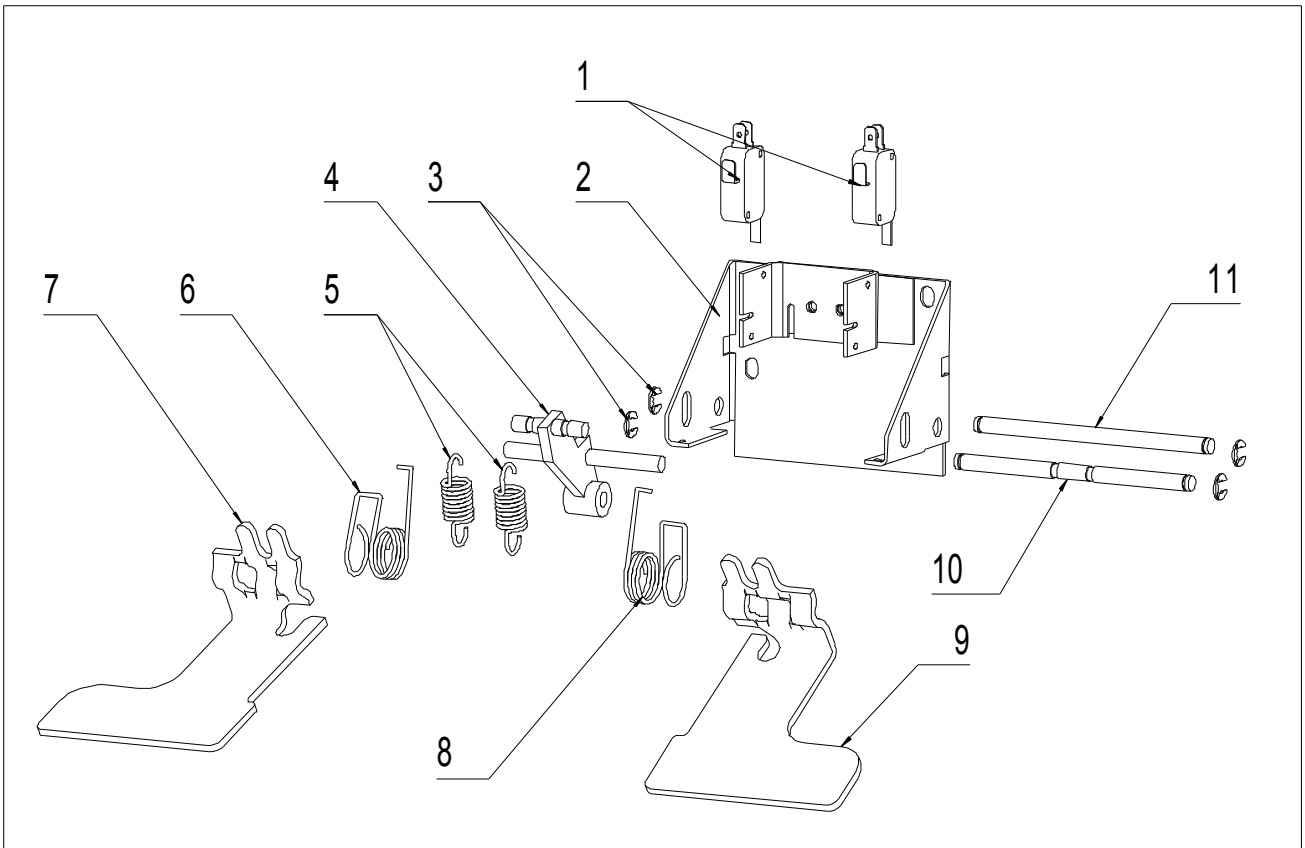
Item	Part Number	Description	Qty.
1	3.4.05.01.001	Dispensing Handle	3
2	2.1.3.26.0002	Dispensing Handle Seat –378	3
3	3.6.39.008	Screw – Handle Adjustment – 378	3
4	3.4.08.01.012	O-ring ϕ 3x1.5	3
5	2.1.3.27.0025	Retention Nut	1
6	3.4.05.02.004	Attaching Nuts – Long, 378	2
7	3.4.05.02.003	Attaching Nuts – Short, 378	2
8	2.1.3.01.0005	Draw Valve – Side, 378	2
9	2.1.3.02.0002	Draw Valve – Middle, 378	1
10a	3.4.08.01.006	Seal – Side Draw Valve, ϕ 16.8x2.4	4
10b	3.4.08.01.015	Seal - Middle Draw Valve, ϕ 16.8x2.5	1
11	3.4.05.03.004	Design Cap, R1, Small	3
12	2.1.3.14.0005	Dispensing Door – 378	1
13	2.1.3.27.0003	Dispensing Retention, 378	1
14	2.1.1.11.0002	Beater Rod – 378	2
15	3.4.08.02.003	Seal – Dispensing Door, 378	2
16	3.4.01.03.002	Front Bearing, 378	2
17	3.4.01.02.001	Shoe-Right, Large	2
18	2.3.4.04.002	Blade-Scraper-Plastic, Large	4
19	3.4.02.01.001	Clip-Scraper, Large	4
20	3.4.07.05.002	Seal – Beater Shaft 28*38*22	2
21	2.1.3.25.0002	Beater Drive Shaft - 378	1
22	2.1.1.10.0001	Beater - 378	1
23	3.4.01.01.001	Shoe-Left, Large	2
24	3.4.08.01.013	O-ring - Plug-Prime ϕ 9x1.9/2.0	4
25	2.1.3.02.0015	Plug-Prime – 378	2

4. Hopper Agitator



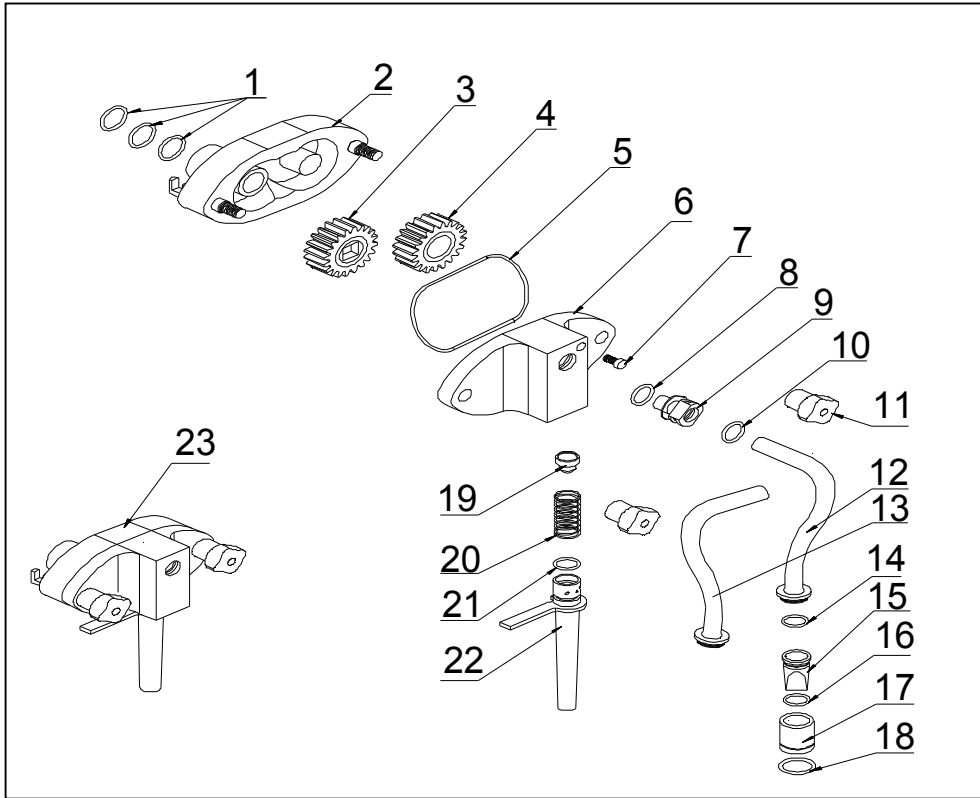
Item	Part Number	Description	Qty.
1	2.1.1.23.0001	Blade – Agitator, STD	2
2	2.1.4.02.005	Cap – Drive Shaft Housing	2
3	2.1.4.02.002	Magnet	2
4	2.1.4.02.003	Shaft – Magnet	2
5	3.3.02.07.003	Bearing – Upper, S6000Z	2
6	3.6.34.003	Lock Ring, ϕ 8	4
7	2.1.3.42.0001	Shaft – Spin, 248	2
8	3.3.02.07.004	Bearing – Lower, S609Z	2
9	2.1.4.02.001	Drive Shaft Housing	2
10	2.1.4.02.015	Pulley – Agitator, away from motor	1
11	2.1.4.02.016	Pulley – Agitator, close to motor	1

5. Draw Switch Assembly



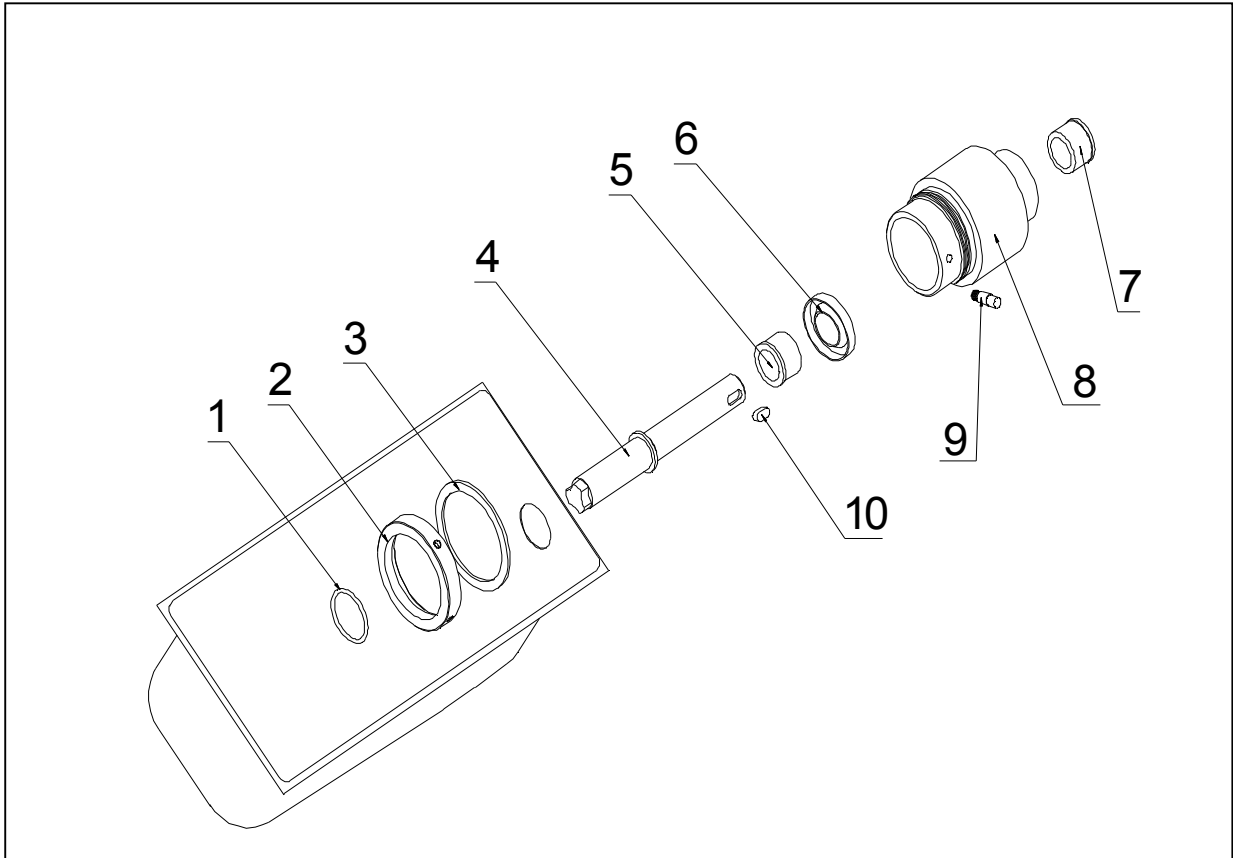
Item	Part Number	Description	Qty.
1	3.1.03.01.004	Switch – Draw, KW-7-9	2
2	2.1.1.19.0010	Bracket – Draw Switch, 378	1
3	3.6.34.002	Lock Ring, $\varnothing 6$	4
4	2.1.1.19.0006	Frame - Spring	1
5	3.6.02.002	Spring – Draw Switch, 378	2
6	3.6.01.001	Spring - Return Left	1
7	2.1.4.05.011	Arm - Return Left	1
8	3.6.01.011	Spring - Return Right	1
9	2.1.4.05.012	Arm - Return Right	1
10	2.1.4.05.001	Rod – Front	1
11	2.1.4.05.002	Rod - Rear	1

6. Air Pump Assembly



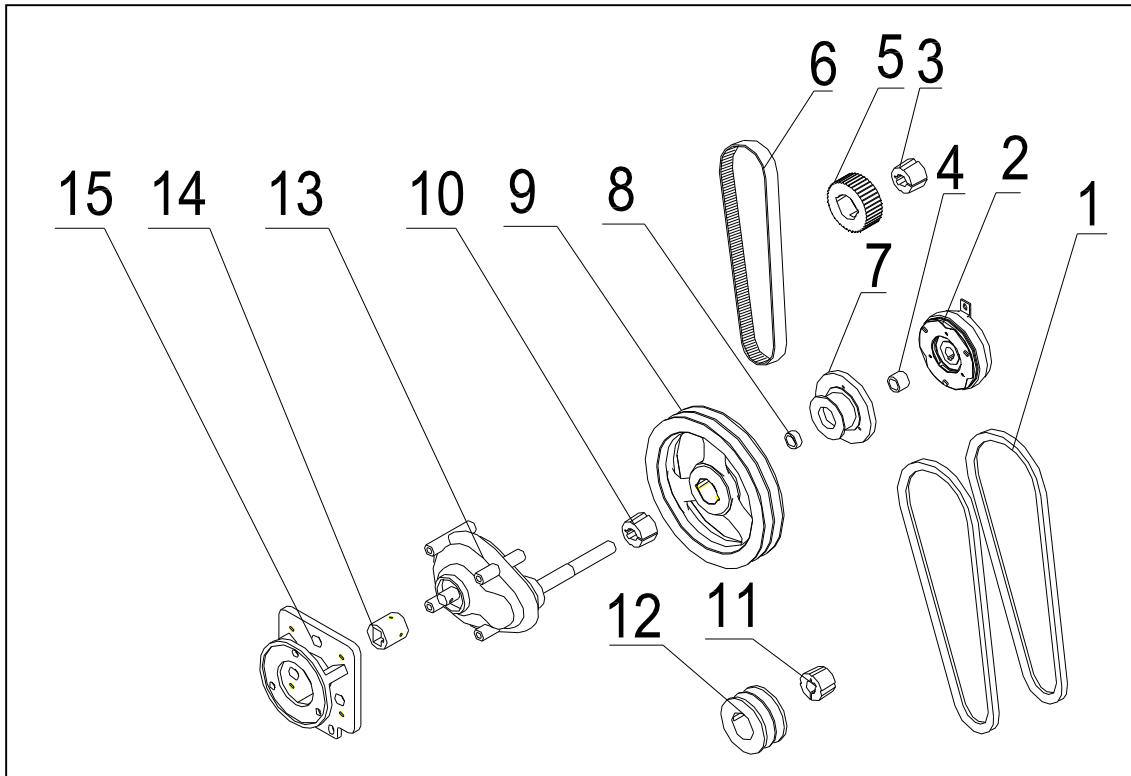
Item	Part Number	Description	Qty.
1	3.4.08.01.025	Seal \varnothing 15.8 \times 2.4	6
2	2.1.4.01.004	Air Pump Shell	2
3	2.1.4.01.013	Driving Gear	2
4	2.1.4.01.012	Driven Gear	2
5	3.4.08.01.004	Seal – Pump Cover	2
6	2.1.4.01.003	Air Pump Cover	2
7	2.1.4.01.029	Lock Nut	2
8	3.4.08.01.003	Seal \varnothing 13.5 \times 2.5	2
9	2.1.4.01.023	Connect Tube	2
10	3.4.08.01.008	Seal \varnothing 11.5 \times 2.5	2
11	2.1.4.01.002	Air Pump Attaching Bolts	4
12	2.1.4.01.044	Discharge Tube - Right	1
13	2.1.4.01.043	Discharge Tube - Left	1
14	3.4.08.01.003	Seal \varnothing 13.5 \times 2.5	2
15	2.1.4.01.035	Check Valve	2
16	3.4.08.01.023	Seal \varnothing 11 \times 1.8	2
17	2.1.4.01.024	Connect Tube - Down	2
18	3.4.08.01.003	Seal \varnothing 13.5 \times 2.5	2
19	3.4.07.06.003	Plug – Suction Tube	2
20	3.6.03.003	Spring – Suction Tube	2
21	3.4.08.01.003	Seal \varnothing 13.5 \times 2.5	2
22	2.1.4.01.049	Suction Tube – 200mm D	2
23	2.1.1.13.0001	Air Pump Assembly	2

7. Pump Drive Shaft Assembly



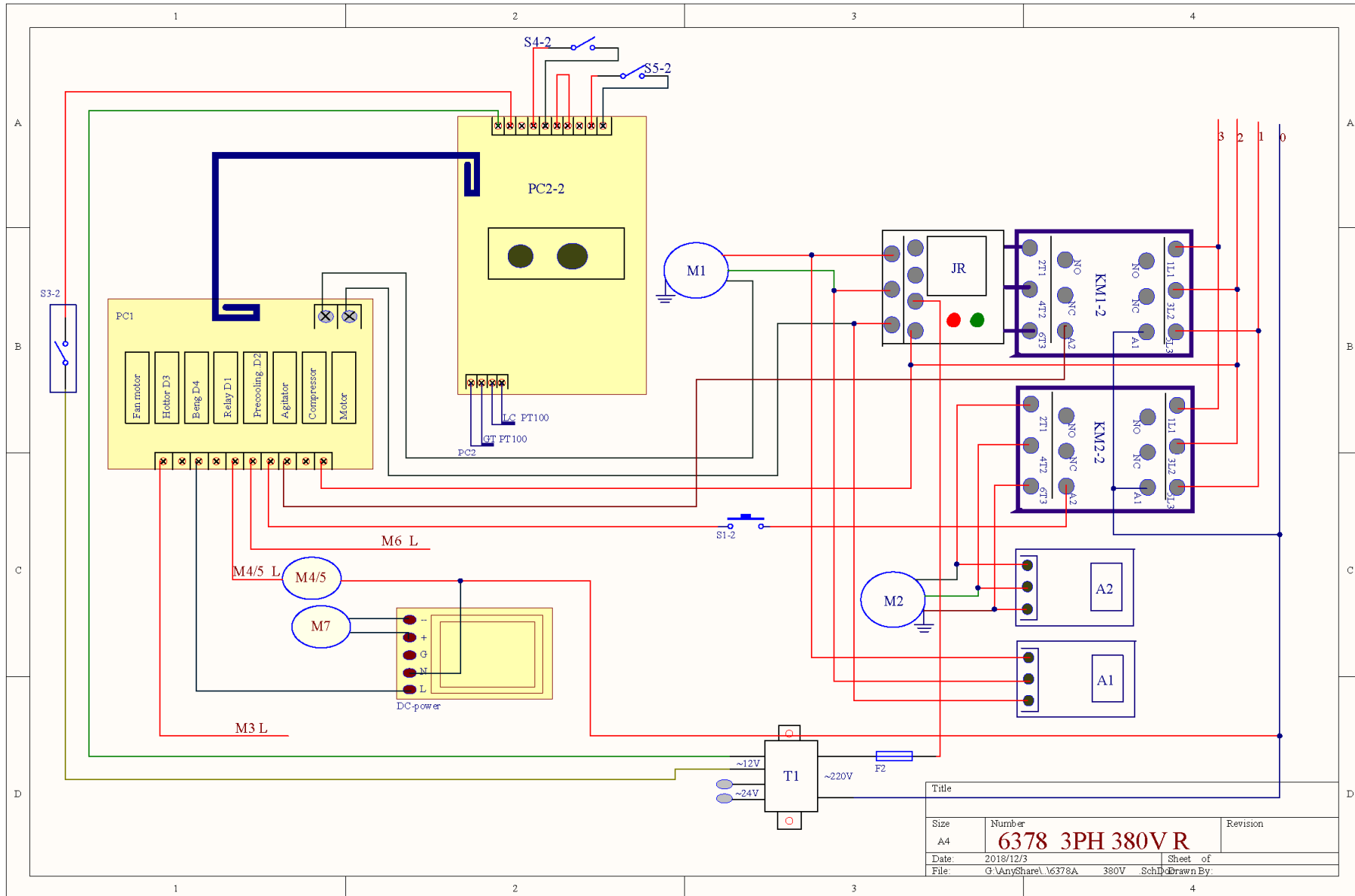
Item	Part Number	Description	Qty.
1	3.4.08.03.010	Nylon Ring – Pump Shaft	2
2	2.1.4.01.016	Nut – Pump Seat	2
3	3.4.08.03.012	Nylon Ring – Pump Seat	2
4	2.1.4.01.018	Drive Shaft - Pump	2
5	3.3.02.06.001	Oil Bearing - Front	2
6	3.3.02.09.002	Oil Seal, 6203-17×30×5	2
7	3.3.02.06.001	Oil Bearing - Back	2
8	2.1.4.01.017	Air Pump Seat	2
9	3.6.39.010	Lock Pin	2
10	3.6.33.002	Flat Key, 5×5×10	2

8. Pump Drive Chain



Item	Part Number	Description	Qty.
1	3.3.03.01.014	Belt – Beater Motor, V Belt, XPA1080.	4
2	3.1.01.06.001	Micro-Clutch, MCS-1.2	2
3	3.3.04.01.005	Bushing – Pump Pulley, 1008-16.	2
4	3.3.04.06.001	Bushings – Micro Clutch #1	2
5	3.3.04.03.001	Pulley – Air Pump, 63-5M-1008	2
6	3.3.03.02.005	Belt – Air Pump, 5M780	2
7	3.3.04.03.002	Pulley – Micro Clutch, 50-5M	2
8	3.3.04.06.002	Bushing – Micro Clutch #2	2
9	3.3.04.02.008	Pulley – Gear Box, SPA212-2	2
10	3.3.04.01.007	Bushing – Motor Pulley, 1210-16	2
11	3.3.04.01.005	Bushing – Beater Motor Pulley, 1008-16.	2
12	3.3.04.02.001	Pulley – Motor, SPA63×2	2
13	3.3.02.01.007	Gear Box, Single-Long with Micro Clutch.	2
14	3.3.02.04.002	Coupling – Drive – 378	2
15	2.1.3.15.0003	Mount – Gear Box, 378	2

9. Electrical Wiring Diagram and Components



Title		Revision
Size	Number	
A4	6378 3PH 380V R	
Date:	2018/12/3	Sheet of
File:	G:\AnyShare\6378A_380V_SchD	Drawn By:

9. Electrical Wiring Diagram and Components

Item	Part Number	Description	Qty.
M1	3.3.01.04.005	Motor, P56AH60F41,750W,380V,50Hz,3PH	2
M2	3.2.01.02.005	Compressor - CAJ2464	2
M3	3.2.03.04.001	Main Fan Motor, YWF4E-350S.	1
M4	3.2.01.01.002	Hopper Compressor – B38h	1
M5	3.2.03.01.001	Hopper Condenser Fan Motor –MAXAIR-15050	1
M6	3.3.01.01.001	Agitator Motor, YN80-25, 220V, 1250/1500RPM	1
M7	3.1.01.06.001	Micro-Clutch, MCS-1.2	2
TH	3.1.02.13.020	Thermostat, PT100, Blue	4
KM	3.1.01.01.010	Contactora	2
JR	3.1.01.02.011	Thermal Overload Relay	2
T	3.1.01.04.007	Transformer, 50313MW-32 UL, 50W	2
PC1	2.2.1.01.0007	Power Board, V2.152.	2
PC2	2.2.1.01.0004	Microprocessor Control Board, V2.152.	2
S1/S2	3.2.04.06.004	Pressure Switch	3
S3	3.1.03.03.004	Power Switch, KCD1, 2-Position	2
S4	3.1.03.01.004	Switch – Draw, KW-7-9	2
S5	3.1.03.04.009	Mix Low Sensor	2
DC	3.1.01.05.004	Power - Micro-Clutch,S-C35-24,100-240V/47-63HZ	2
F	3.1.02.08.002	Fuse, Transformer, 0.5A	2
A	3.1.01.05.002	Arc Deflector	2

10. Accessories

Item	Parts Number	Description	Qty.	Unit Price
1	3.7.15.002	Lubricant	1	US\$2.50
2	3.4.07.01.002	Pick Tool - O-Ring Removal	1	US\$0.67
3	8.1.06.002	Tune up Kit – 378A	1	US\$8.50
4	3.7.24.001	Brush - White	1	US\$4.67
5	3.7.24.002	Brush - ϕ 25 \times 70 White	1	US\$1.17
		Brush - ϕ 38 \times 80 White	1	US\$0.67
		Brush - ϕ 25 \times 60 Black	1	US\$4.17
		Brush - ϕ 3 \times 25 White	1	US\$0.33
		Brush - ϕ 10 \times 25 Double	1	US\$0.58
		Brush - ϕ 13 \times 77 White	1	US\$0.58
6	3.7.25.001	Pail (Optional)	1	US\$6.42
7	2.3.4.34.017	Air Chute - 378	1	US\$173.00