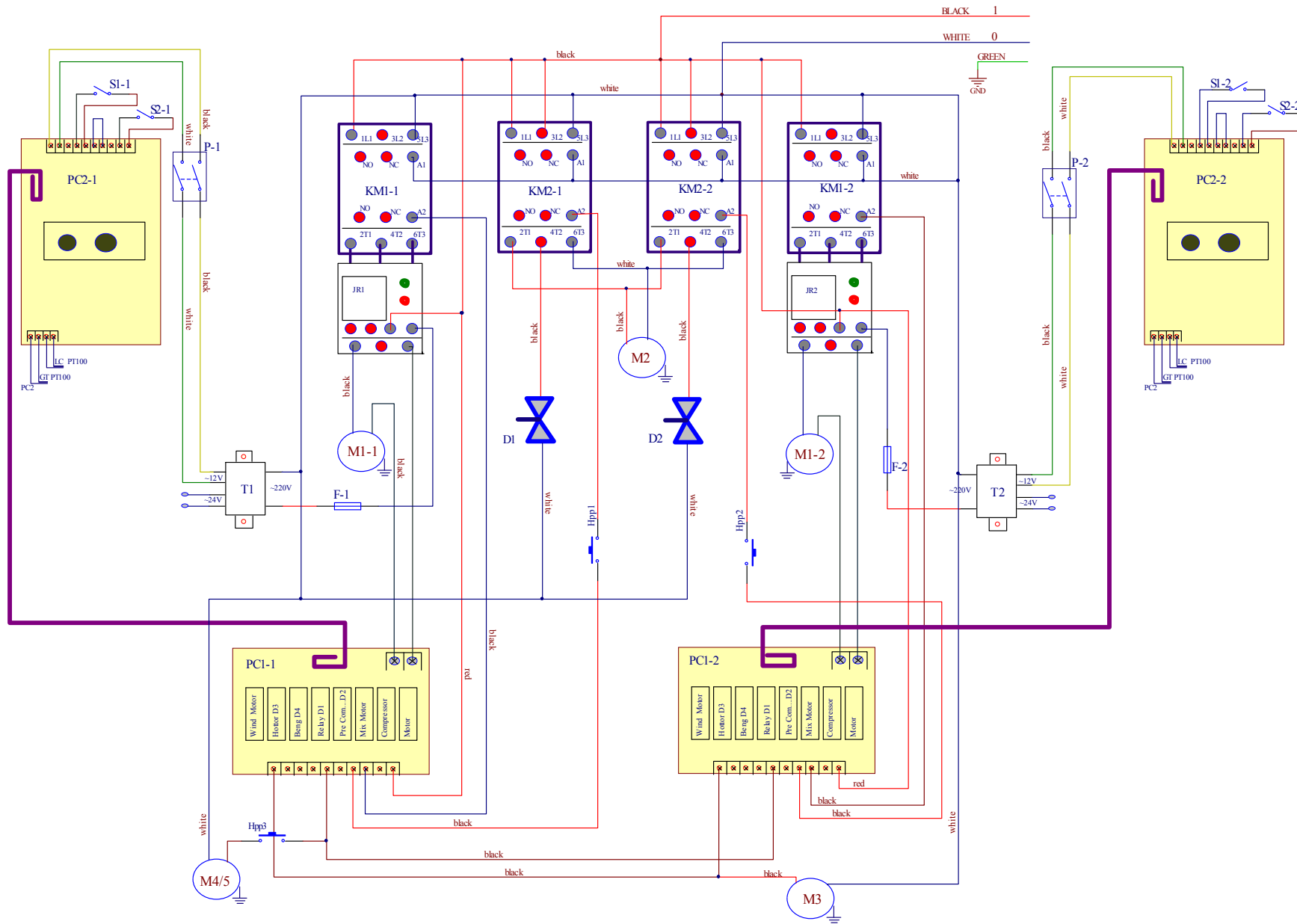


SPARE PARTS LIST MODEL 6250

1. Electrical Drawing and Components



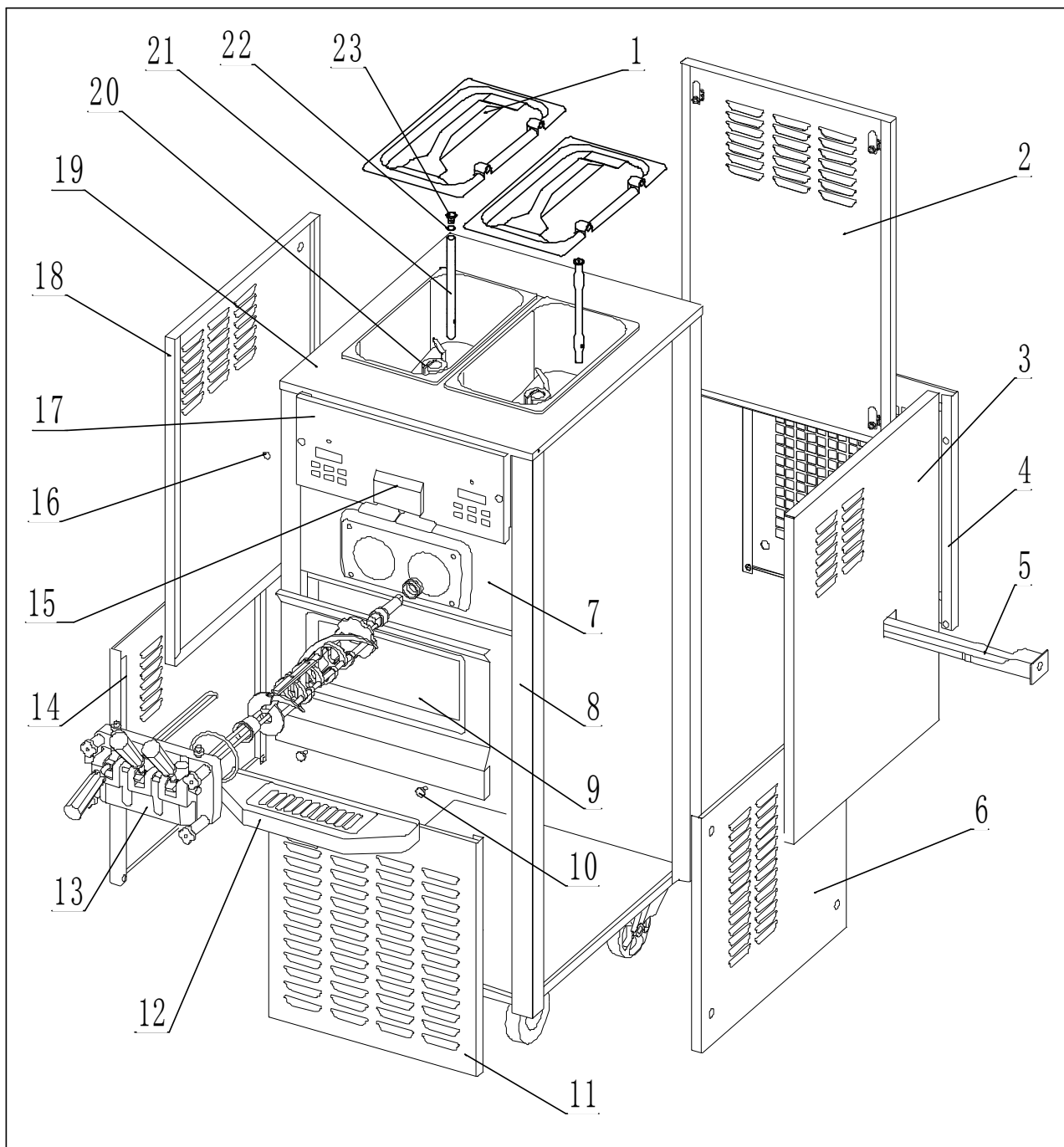
SPARE PARTS LIST MODEL 6250

1. Electrical Drawing and Components

Item	Old Part #	New Part #	QTY.	Description	Price
M1	5001019010	3.3.07.01.004	2	Motor – Beater 900W/50HZ	██████████
M2	5001009013	3.2.01.02.005	1	Compressor - CAJ2464	██████████
M3	5001007003	3.2.03.04.001	1	Fan Motor - Main	██████████
M4	5001008007	3.2.01.01.002	1	Compressor – Mix	██████████
M5	5001004001	3.2.03.01.001	1	Fan Motor - Mix	██████████
D	5004006002	3.2.04.04.002	2	Solenoid Valve	██████████
JR	5002005008	3.1.01.02.010	2	Thermal Overload Relay	██████████
KM1	5002001005	3.1.01.01.004	2	Contact of Motor	██████████
KM2	5002001005	3.1.01.01.004	2	Contact of Compressor	██████████
T	5002017004	3.1.01.04.005	2	Transformer	██████████
LC/GT	5007018008	3.1.02.13.020	4	Thermostat PT100	██████████
PS	5007021004	3.1.03.03.003	2	Power Switch	██████████
PC1	2008001007	2.2.1.01.0005	2	Power Board	██████████
PC2	2008001013	2.2.1.01.0001	2	Microprocessor Control Board	██████████
S1	5007019004	3.1.03.01.004	2	Switch - Draw	██████████
S2	5008027001	3.1.03.04.009	2	Indicator “Mix Low”	██████████
Hpp1/Hpp2	5004009005	3.2.04.06.004	1	Pressure Switch – Main Compressor	██████████
Hpp3	5004009004	3.2.04.06.003	1	Pressure Switch – Mix Compressor	██████████
F	5007011002	3.1.02.08.002	2	Fuse	██████████

SPARE PARTS LIST MODEL 6250

2. Final Assembly



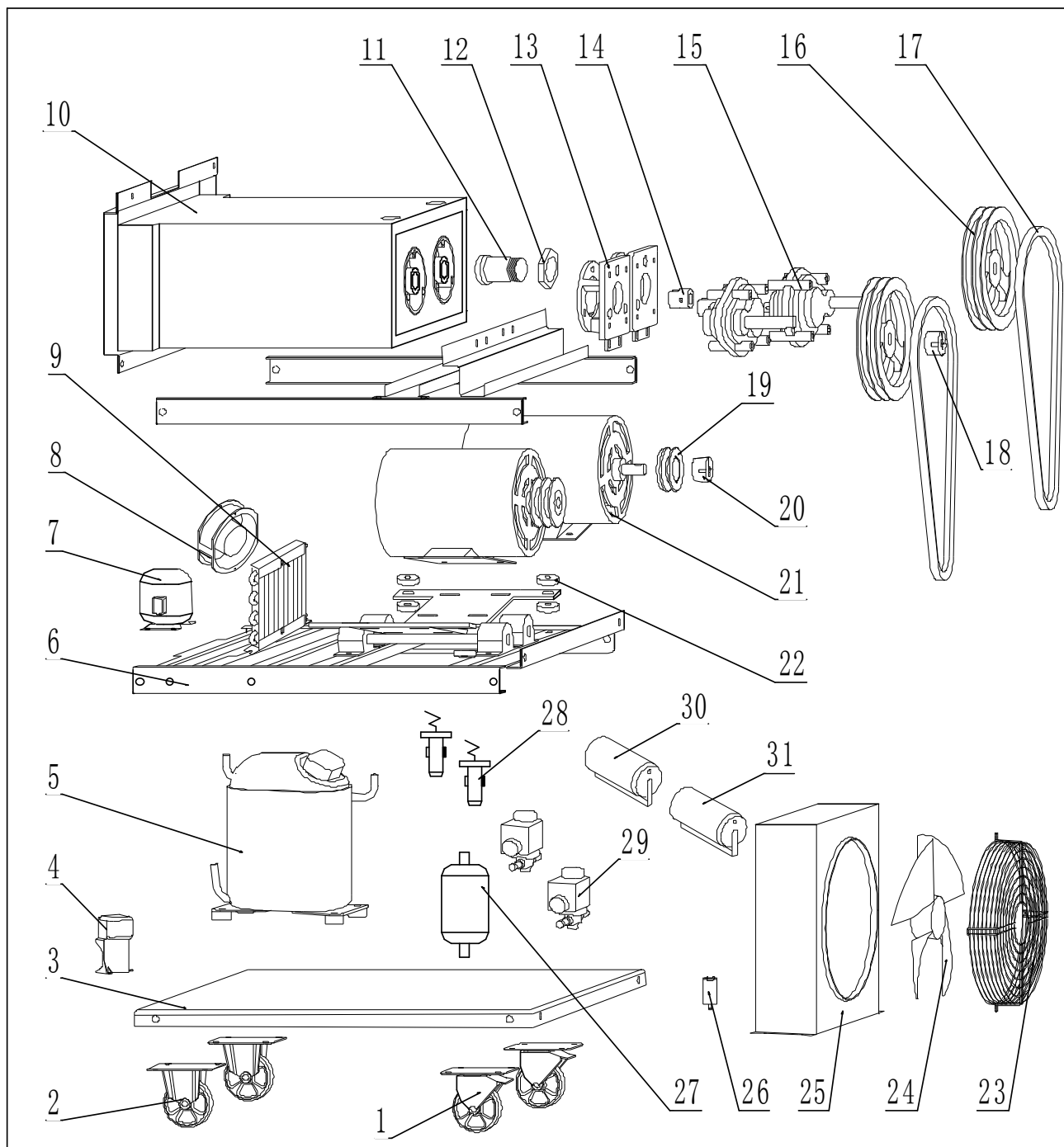
SPARE PARTS LIST MODEL 6250

2. Final Assembly

Item	Old Part #	New Part #	QTY.	Description	Price
1	4003001007	3.4.03.01.004	2	Top Cover	██████████
2	2001015001	2.3.4.14.001	1	Panel - Upper Rear	██████████
3	2001022001	2.3.4.21.001	1	Panel - Upper Right	██████████
4	2001016001	2.3.4.15.001	1	Panel - Lower Rear	██████████
5	4003004001	3.4.04.02.001	1	Rear Drip Tray	██████████
6	2001024002	2.3.4.22.001	1	Panel - Lower Right	██████████
7	2001059003	2.1.1.06.0003	1	Cylinder Assembly	██████████
8	2001029004	2.3.4.09.011	4	Pillar	██████████
9	2001010001	2.3.4.16.002	1	Panel - Middle Front	██████████
10	6003001004	3.6.39.004	2	Bolt	██████████
11	2001011002	2.3.4.17.004	1	Panel - Lower Front	██████████
12	4003003003	3.4.04.01.002	1	Drip Pan	██████████
13	2004001001	2.1.1.15.0001	1	Dispensing Door Assembly	██████████
14	2001024002	2.2.4.31.0001	1	Panel - Lower Left	██████████
15	3002001002	3.4.07.07.003	1	Cover of Spigot Switch	██████████
16	5009001001	3.4.07.01.001	6	Clasp	██████████
17	2001006002	2.3.4.07.005	1	Panel - Upper Front	██████████
18	2001018001	2.3.4.19.004	1	Panel -Upper Left	██████████
19	2005003001	2.1.1.02.0002	1	Hopper Assembly	██████████
20	2007002002	2.1.1.12.0003	2	Blade – Agitator (Optional)	██████████
21	4003005002	2.1.3.39.0002	2	Feed Tube	██████████
22	6003026028	3.4.08.01.028	2	Seal - Plug of Feed Tube	██████████
23	4001001014	2.1.3.23.0001	2	Plug – Feed Tube	██████████

SPARE PARTS LIST MODEL 6250

3. Inside



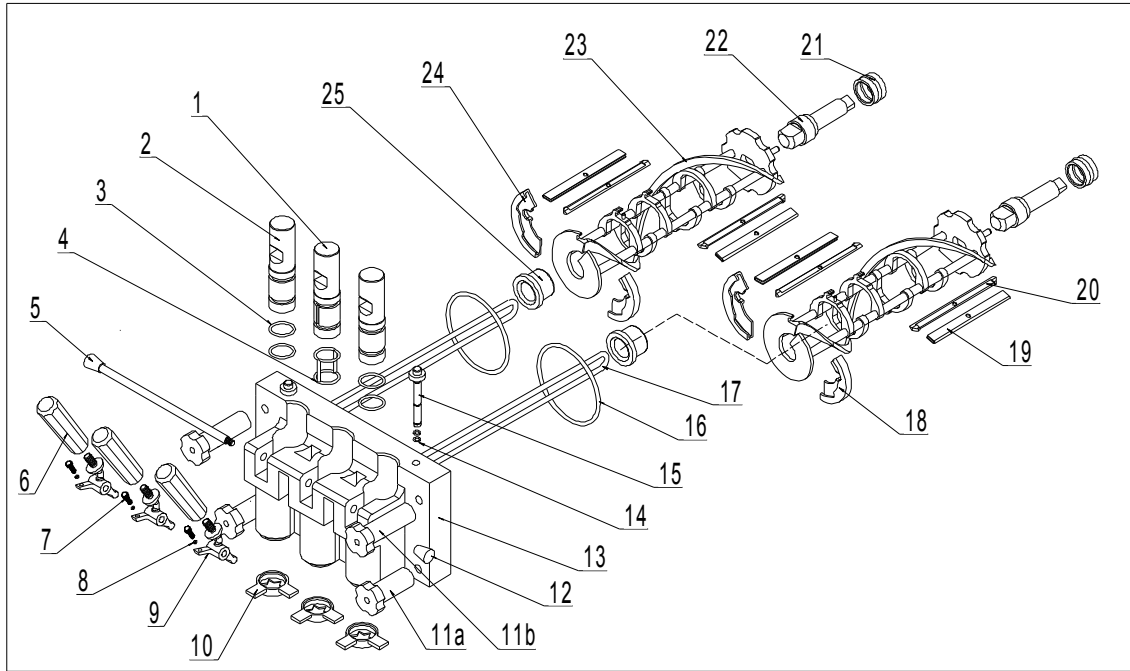
SPARE PARTS LIST MODEL 6250

3. Inside

Item	Old Part #	New Part #	QTY.	Description	Price
1	5005012001	3.3.05.02.001	2	Caster- Swivel	
2	5005011001	3.3.05.01.001	2	Caster- Fixed	
3	3001030006	2.1.1.17.0017	1	Chassis	
4	5001012008	3.2.01.04.004	1	Accessories – Compressor	
5	5001009013	3.2.01.02.005	1	Compressor - CAJ2464	
6	3001011004	2.2.4.06.0033	2	Crossbeam - motor	
7	5001008007	3.2.01.01.002	1	Compressor – Mix	
8	5001004001	3.2.03.01.001	1	Fan Motor - Mix	
9	5001001001	3.2.02.01.001	1	Condenser – Mix	
10	2005002004	2.1.1.06.0003	1	Cylinder Assembly	
11	4010001001	3.3.02.02.001	2	Rear Shell Bearing - Cylinder	
12	4010003001	3.3.02.02.010	2	Nut – Rear Shell Bearing	
13	2002006002	2.1.3.15.0002	2	Mount – Gear Box	
14	4010002002	3.3.02.04.001	2	Coupling – Drive	
15	4010005002	3.3.02.01.002	2	Gear Box	
16	5003018007	3.3.04.02.007	2	Pulley – Gear Box	
17	5003006013	3.3.03.01.013	4	Belt – Beater Motor	
18	5003012001	3.3.04.01.005	2	Bushing – Gear Box Pulley	
19	5003018001	3.3.04.02.001	2	Pulley - Motor	
20	5003012001	3.3.04.01.005	2	Bushing – Motor Pulley	
21	5001019010	3.3.07.01.004	2	Motor – Beater 900W/60HZ	
22	5005015002	3.4.08.04.002	8	Rubber Gasket	
23	5001007003-1	3.2.03.04.001-1	1	Fan motor cover	
24	5001007003	3.2.03.04.001	1	Fan Motor - Main	
25	5001002005	3.2.02.01.005	1	Condenser – Main	
26	5001007003-2	3.2.03.04.001-2	1	Capacitor -Fan Motor Main	
27	5004008002	3.2.04.05.003	1	Filter Dryer – Main	
28	5004003001	3.2.04.01.001	2	Thermostatic Expansion Valve	
29	5004006002	3.2.04.04.002	2	Solenoid Valve	
30	5001023001	3.1.02.22.003	2	Running Capacitor – Motor 20u	
31	5001022002	3.1.02.22.005	2	Starting Capacitor –Motor 200uf	

SPARE PARTS LIST MODEL 6250

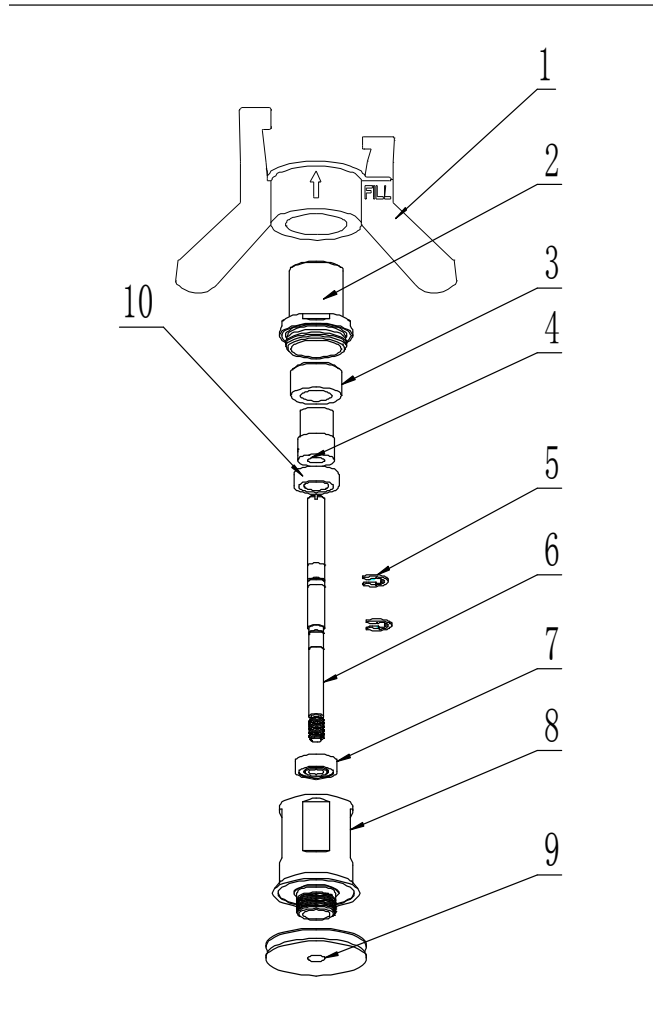
4. Dispensing Door and Beater



Item	Old Part #	New Part #	Description	Qty.	Unit Price
1	4002005001	2.1.3.01.0009	Draw Valve - Middle	1	
2	4002005003	2.1.3.02.0003	Draw Valve - Side	2	
3	6003026011	3.4.08.01.011	Seal – Side Draw Valve	4	
4	6003026002	3.4.08.01.015	Seal - Middle Draw Valve	1	
5	4002015003	2.1.3.27.0002	Dispensing Retention	1	
6	4002003005	3.4.05.01.011	Dispensing Handle	3	
7	6003037004	3.6.39.009	Screw - Handle	3	
8	6003026012	3.4.08.01.012	O-ring $\varnothing 3 \times 1.5$	3	
9	4002017001	2.1.3.26.0001	Dispensing Handle Seat	3	
10	4002002002	3.4.05.03.002	Design Cap	3	
11a	4002007001	3.4.05.02.002	Attaching Nuts Short	2	
11b	4002007002	3.4.05.02.001	Attaching Nuts Long	2	
12	4002016001	2.1.3.27.0025	Retention Nut	1	
13	4002001003	2.1.3.14.0003	Dispensing Door	1	
14	6003026013	3.4.08.01.013	O-ring - Plug-Prime $\varnothing 9 \times 1.9$	2	
15	6003030002	2.1.3.02.0015	Plug-Prime	2	
16	6003027008	3.4.08.02.007	Seal of Dispensing Door	2	
17	4002012002	2.1.3.22.0002	Beater Rod	2	
18	4005014002	3.4.01.02.002	Shoe-Right	2	
19	2001097001	2.3.4.04.001	Clip-Scraper	4	
20	4005016002	3.4.02.01.002	Blade-Scraper-Plastic	4	
21	6003029002	3.4.07.05.002	Seal – Beater Shaft 28*38*22	2	
22	4005007001	2.1.3.25.0001	Beater Drive Shaft	2	
23	2006005002	2.1.1.10.0002	Beater	2	
24	4005013002	3.4.01.01.002	Shoe-Left	2	
25	4005015001	3.4.01.03.001	Front Bearing	2	

SPARE PARTS LIST MODEL 6250

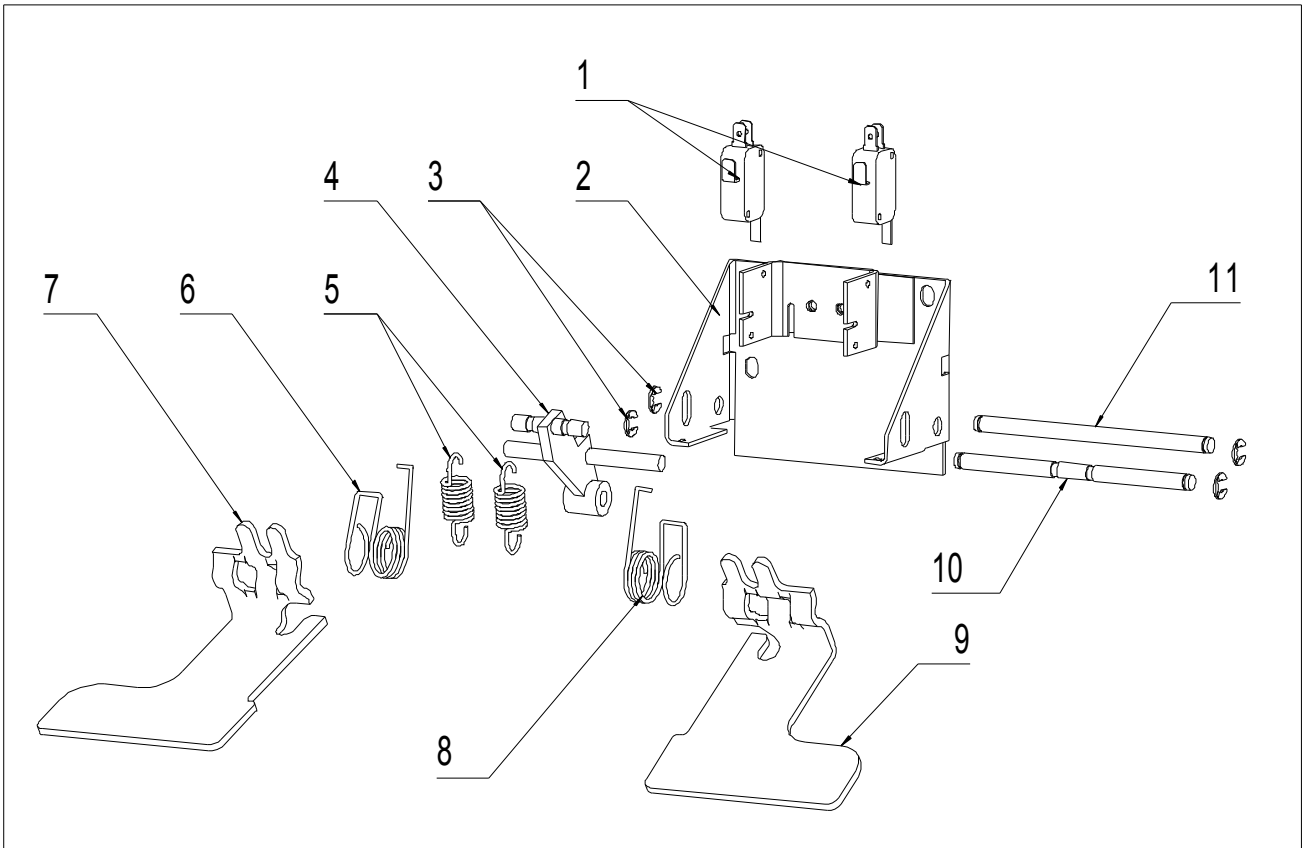
5. Agitator (Optional)



Item	Old Part #	New Part #	Description	Qty.	Unit Price
1	2007002003	2.1.4.02.012	Blade - Agitator	2	
2	4001001005	2.1.4.02.005	Cap - Drive Shaft Housing	2	
3	4001001002	2.1.4.02.010	Magnet	2	
4	4001001003	2.1.4.02.003	Shaft - Magnet	2	
5	6003033003	3.6.34.003	Lock Ring	4	
6	4001001013	2.1.4.02.009	Shaft - Spin	2	
7	4011001008	3.3.02.07.004	Bearing - Lower	2	
8	4001001001	2.1.4.02.001	Drive Shaft Housing	2	
9	4001001006	2.1.4.02.006	Pulley - Agitator	2	
10	4011001007	3.3.02.07.003	Bearing - Upper	2	

SPARE PARTS LIST MODEL 6250

6. Draw Switch



Item	Old Part #	New Part #	Description	Qty.	Unit Price
1	5007019004	3.1.03.01.004	Switch - Draw	2	██████████
2	2009011001	2.1.1.19.0010	Bracket – Draw Switch	1	██████████
3	6003033002	3.6.34.002	Lock Ring	4	██████████
4	2009012001	2.1.1.19.0006	Frame - Spring	1	██████████
5	5008004002	3.6.02.002	Spring	2	██████████
6	5008002002	3.6.01.002	Spring - Return Left	1	██████████
7	2009005002	2.1.4.05.011	Arm - Return Left	1	██████████
8	5008003002	3.6.01.012	Spring - Return Right	1	██████████
9	2009006002	2.1.4.05.012	Arm - Return Right	1	██████████
10	4007001001	2.1.4.05.001	Rod – Front	1	██████████
11	4007001002	2.1.4.05.002	Rod - Rear	1	██████████

SPARE PARTS LIST MODEL 6250

7. Accessories

Item	Old Part #	New Part #	Description	Qty.	Unit Price
1	6003036005	3.7.15.001	Lubricant	1	██████████
2	Sanitizer	Sanitizer	Sanitize Powder	1	██████████
3	6003051001	3.4.07.01.002	Pick Tool - O-Ring Removal	1	██████████
4	Kit-6250	Kit-6235	Tune up Kit	1	██████████
5	6003051004	3.7.24.001	Brush - White	1	██████████
6	6003051003	3.7.24.002	Brush - φ25×70 White	1	██████████
			Brush - φ38×80 White	1	██████████
			Brush - φ25×60 Black	1	██████████
			Brush - φ3×25 White	1	██████████
			Brush - φ10×25 Double	1	██████████
			Brush - φ13×77 White	1	██████████
7	2001109002	2.3.4.34.002	Air Chute	1	██████████
8	6003051005	3.7.25.001	Pail	1	██████████