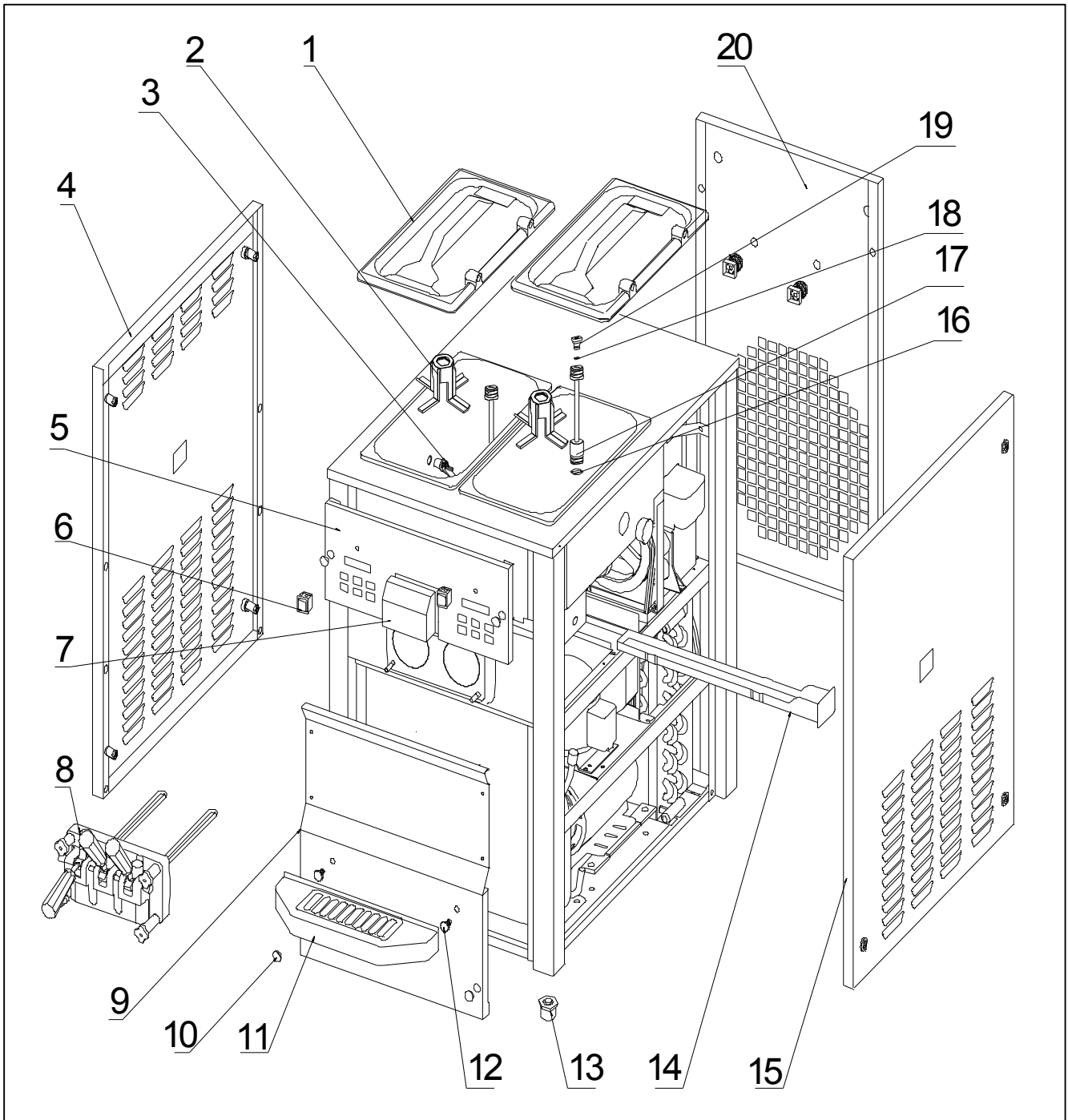
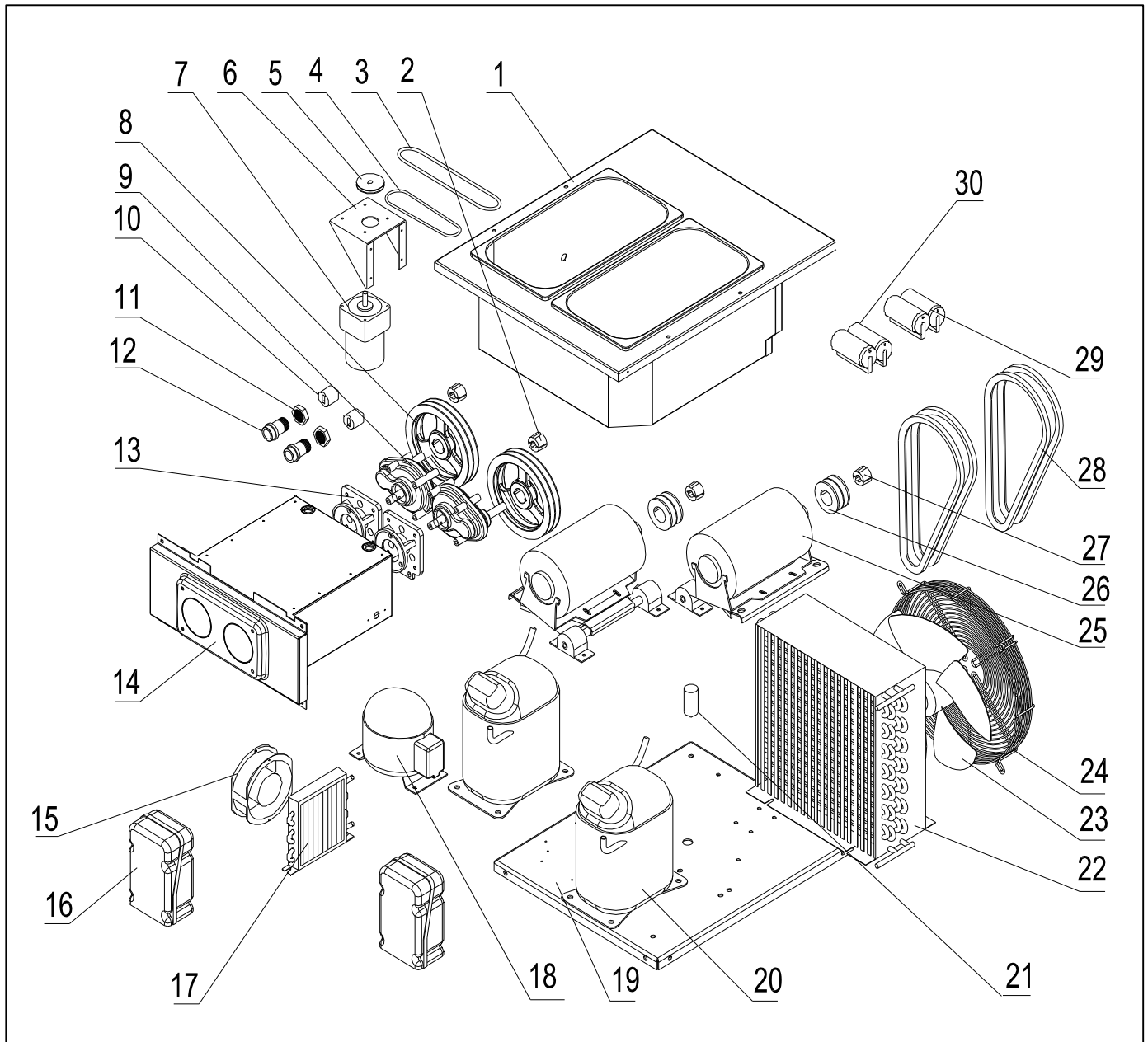


**1. Final Assembly**

**1. Final Assembly**

Item	Part Number	Description	Qty.	Unit Price
1	3.4.03.01.004	Top Cover	2	██████████
2	2.1.1.23.0002	Blade_Agitator	2	██████████
3	3.1.03.04.009	Mix Low Sensor	2	██████████
4	2.3.4.18.008	Panel_Left	1	██████████
5	2.3.4.08.002	Panel_Upper Front	1	██████████
6	3.1.03.03.003	Power Switch_KCD2	2	██████████
7	3.4.07.07.004	Cover_Spigot Switch	1	██████████
8	2.1.1.15.0007	Dispensing Door Assembly	1	██████████
9	2.3.4.17.011	Panel_Lower Front	1	██████████
10	3.4.07.01.001	Snapper	6	██████████
11	3.4.04.01.002	Drip Tray_Front	1	██████████
12	3.6.39.004	Bolt_Drip Tray	2	██████████
13	3.3.05.03.001	Leg	4	██████████
14	3.4.04.02.001	Internal Drip Tray	1	██████████
15	2.3.4.20.008	Panel_Right	1	██████████
16	3.4.08.01.002	Seal_Feed Tube_ϕ 18×2.2	8	██████████
17	3.4.07.04.020	Feed Tube_Large Inlet	2	██████████
18	3.4.08.01.002	Seal_Air Orifice Cap_ϕ 6.2×1.9	2	██████████
19	2.1.3.23.0001	Air Orifice Cap_Feed Tube	2	██████████
20	2.3.4.13.008	Panel_Rear	1	██████████

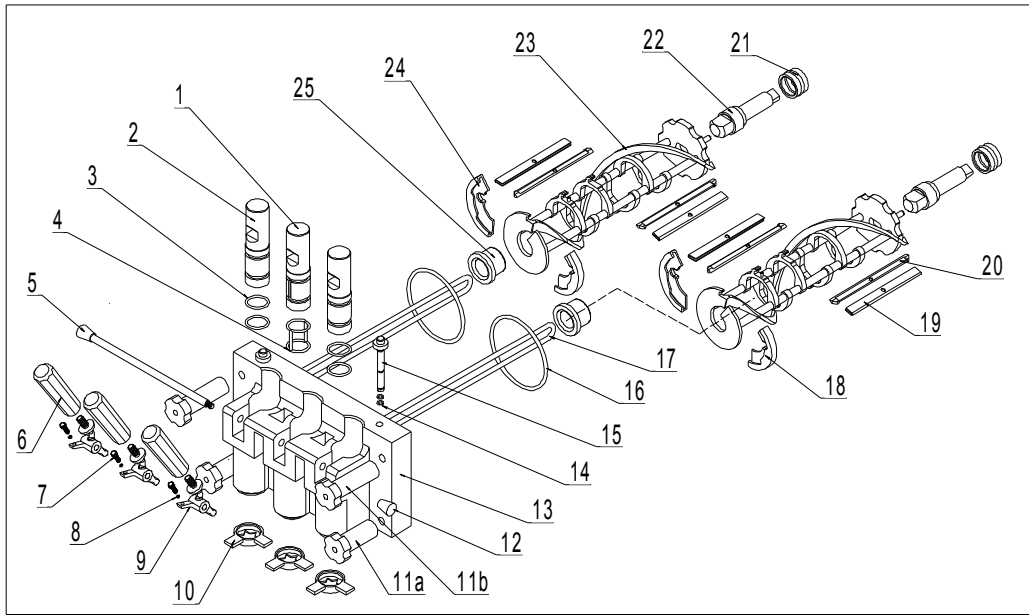
**2. Interior**



**2. Interior**

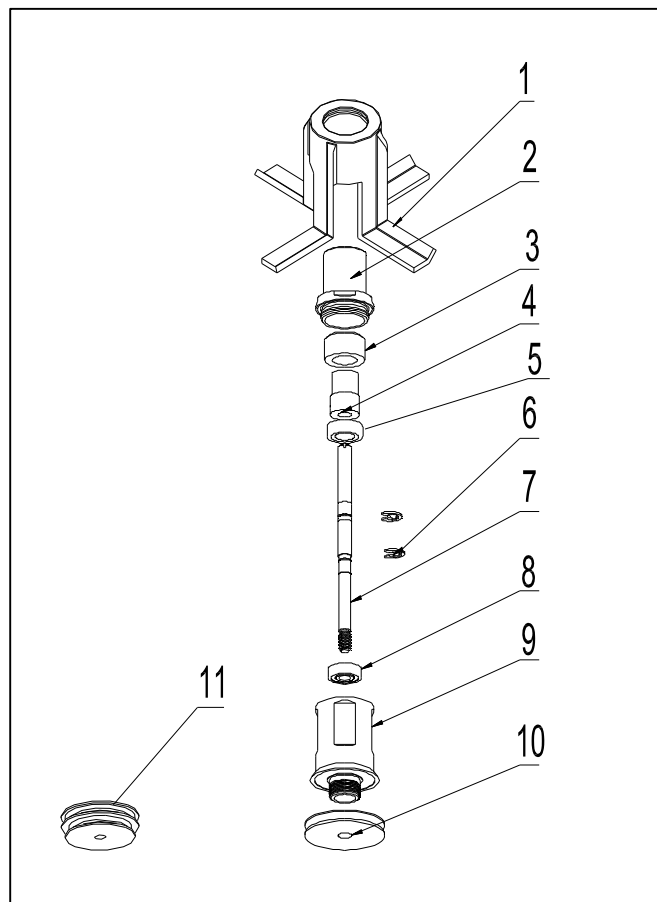
<b>Ite</b>	<b>Part Number</b>	<b>Description</b>	<b>Qty.</b>	<b>Unit Price</b>
1	2.1.1.02.0056	Hopper Assembly	1	
2	3.3.04.01.005	Bushing_Gear Box Pulley	2	
3	2.1.4.08.003	Belt_Agitator_Between Hoppers	1	
4	2.1.4.08.023	Belt_Agitator_Between Motor and Pulley	1	
5	3.3.04.04.008	Pulley_Agitator Motor_34mm	1	
6	2.3.4.45.007	Bracket_Agitator Motor	1	
7	3.3.01.01.006	Agitator Motor	1	
8	3.3.04.02.007	Pulley_Gear Box_SPA182×2	2	
9	3.3.02.01.002	Gear Box	2	
10	3.3.02.04.001	Coupling_Drive	2	
11	3.3.02.02.010	Nut_Rear Shell Bearing	2	
12	3.3.02.02.001	Rear Shell Bearing_Cylinder	2	
13	2.1.3.15.0002	Mount_Gear Box	2	
14	2.1.1.06.0025	Cylinder Assembly	1	
15	3.2.03.01.001	Fan Motor_Hopper Condenser	1	
16	3.2.01.04.011	Start Component_Compressor_Cylinder	1	
17	3.2.02.01.001	Condenser_Hopper_0.7m <sup>2</sup>	1	
18	3.2.01.01.002	Compressor_Hopper	1	
19	2.2.4.01.0007	Buttom Chassis	1	
20	3.2.01.02.033	Compressor_Cylinder	1	
21	3.2.03.04.001-2	Capacitor_Main Fan Motor	1	
22	3.2.02.01.008	Main Condenser_10m <sup>2</sup>	1	
23	3.2.03.04.001	Main Fan Motor	1	
24	3.2.03.04.001-1	Cover_Main Fan Motor	1	
25	3.3.01.05.003	Beater Motor_900W_220/60/1	2	
26	3.3.04.02.003	Pulley_Beater Motor_SPA71×2	2	
27	3.3.04.01.006	Bushing_Motor Pulley	2	
28	3.3.03.01.017	Belt_Beater Motor_VXPA1232.	4	
29	3.1.02.22.009	Run Capacitor_25uF	2	
30	3.1.02.22.061	Start Capacitor_267.5uF	2	

**3. Dispensing Door and Beater Assembly**



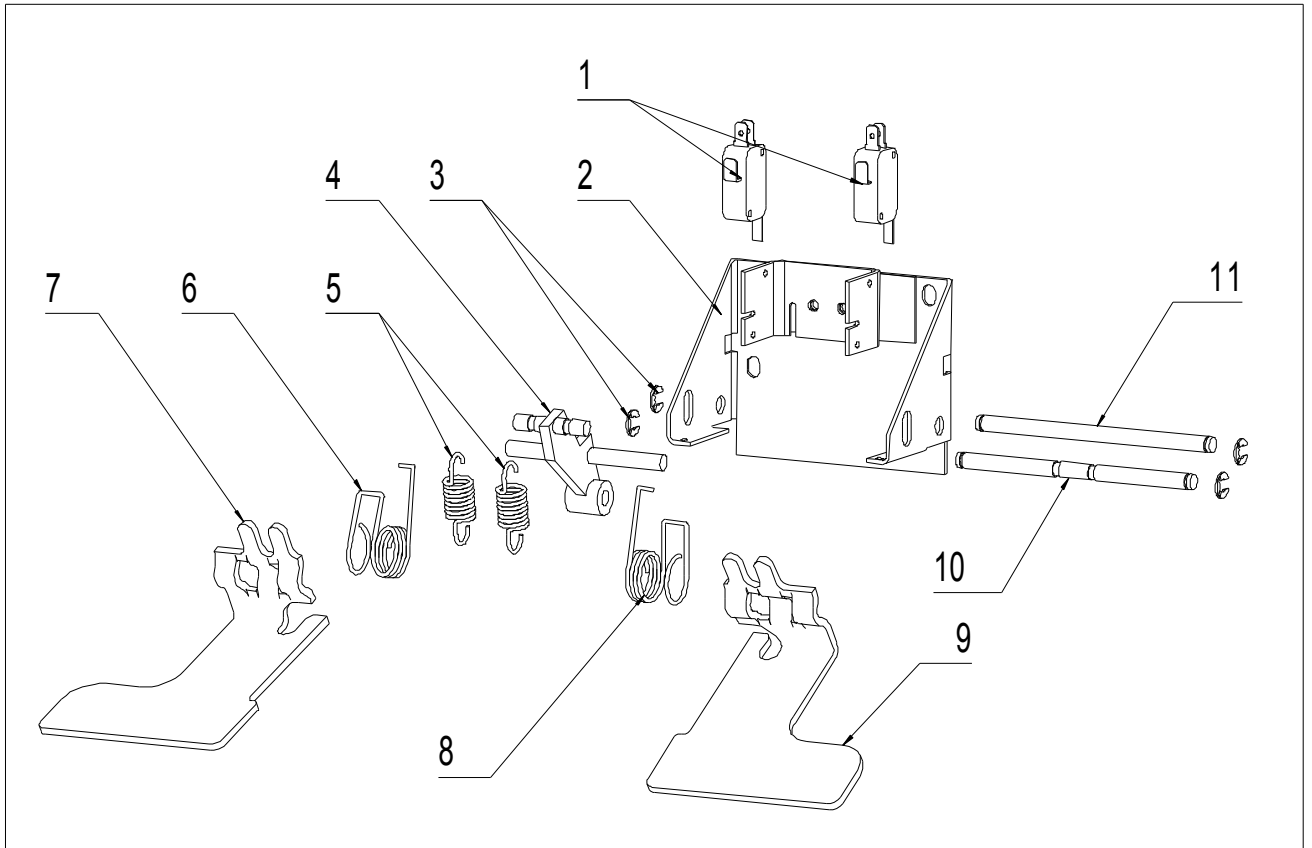
Item	Part Number	Description	Qty.	Unit Price
1	2.1.3.02.0003	Draw Valve_Center	1	
2	2.1.3.01.0009	Draw Valve_Side	2	
3	3.4.08.01.011	Oring_φ19x3/3.15	4	
4	3.4.08.01.019	O-Oring_φ19x3x2	1	
5	2.1.3.27.0002	Dispensing Retention	1	
6	3.4.05.01.001	Dispensing Handle	3	
7	3.6.39.009	Screw_Handle Adjustment	3	
8	3.4.08.01.012	Oring_φ3x1.5	3	
9	2.1.3.26.0001	Dispensing Handle Seat	3	
10	3.4.05.03.005	Design Cap	3	
11a	3.4.05.02.008	Attaching Nuts_Short	2	
11b	3.4.05.02.010	Attaching Nuts_Long	2	
12	2.1.3.27.0025	Retention Nut	1	
13	2.1.1.15.0007	Dispensing Door	1	
14	3.4.08.01.013	Oring_Prime Plug	2	
15	2.1.3.02.0015	Prime Plug	2	
16	3.4.08.02.007	Gasket_Dispensing Door	2	
17	2.1.1.11.0001	Beater Rod	2	
18	3.4.01.02.002	Shoe – Right	2	
19	2.3.4.04.001	Clip-Scraper	4	
20	3.4.02.01.002	Blade_Scraper_Plastic	4	
21	3.4.07.05.002	Seal_Beater Shaft	2	
22	2.1.3.25.0001	Beater Drive Shaft	2	
23	2.1.1.10.0002	Beater	2	
24	3.4.01.01.002	Shoe – Left	2	
25	3.4.01.03.001	Front Bearing	2	

**4. Hopper Agitator**



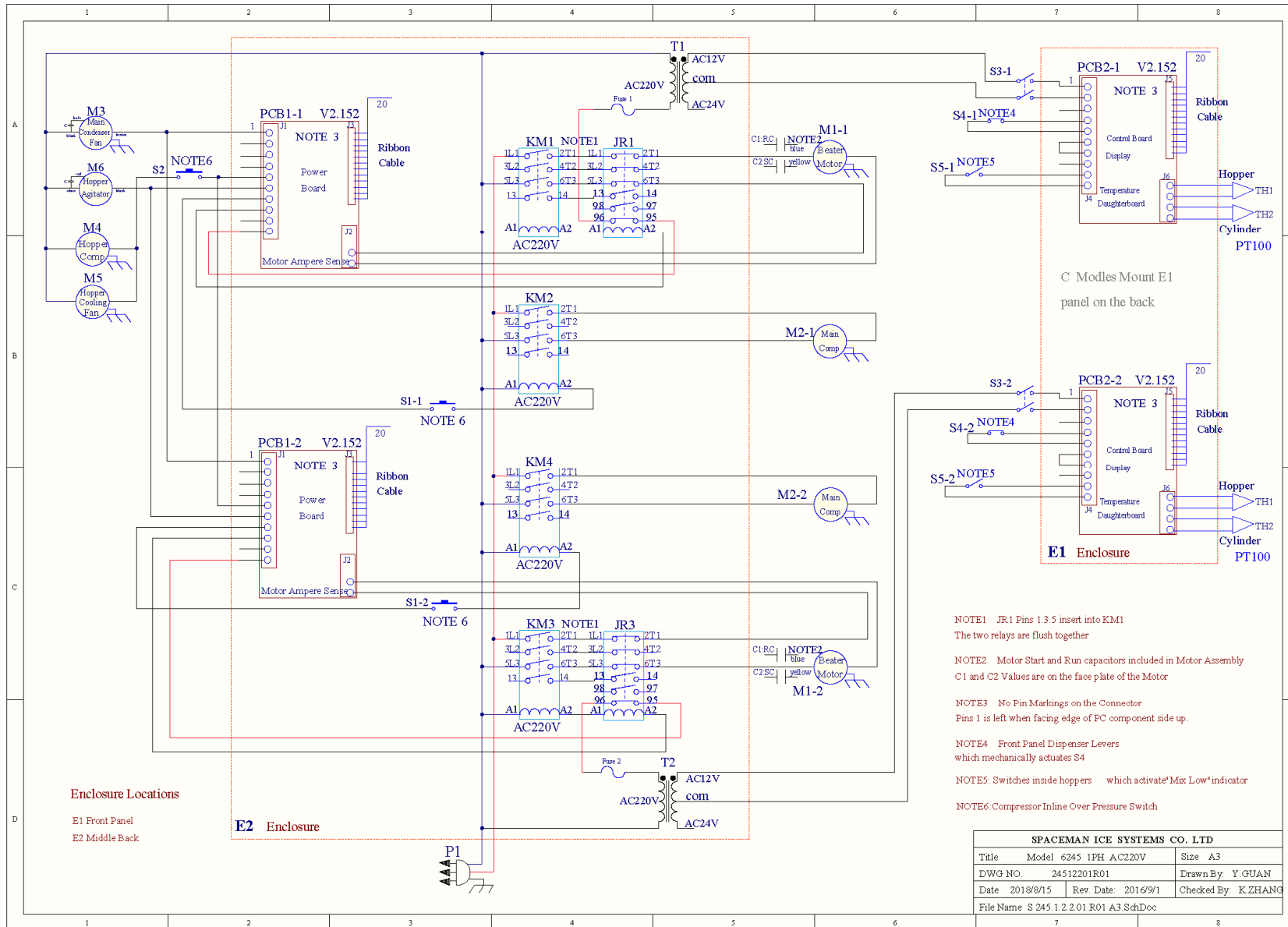
Item	Part Number	Description	Qty.	Unit Price
1	2.1.1.23.0002	Blade_Agitator	2	██████████
2	2.1.4.02.005	Cap_Drive Shaft Housing	2	██████████
3	2.1.4.02.002	Magnet	2	██████████
4	2.1.4.02.003	Shaft_Magnet	2	██████████
5	3.3.02.07.003	Bearing_Upper	2	██████████
6	3.6.34.003	Lock Ring_ϕ 8	4	██████████
7	2.1.3.42.0001	Shaft_Spin	2	██████████
8	3.3.02.07.004	Bearing_Lower	2	██████████
9	2.1.4.02.001	Drive Shaft Housing	2	██████████
10	2.1.4.02.015	Pulley_Agitator_away from Motor	1	██████████
11	2.1.4.02.016	Pulley_Agitator_close to Motor	1	██████████

**5. Draw Switch Assembly**



Item	Part Number	Description	Qty.	Unit Price
1	3.1.03.01.004	Switch_Draw_KW-7-9	2	██████████
2	2.1.1.19.0010	Bracket_Draw Switch	1	██████████
3	3.6.34.002	Lock Ring_ϕ 6	4	██████████
4	2.1.1.19.0006	Frame_Spring	1	██████████
5	3.6.02.002	Spring_Draw Switch	2	██████████
6	3.6.01.001	Spring_Return Left	1	██████████
7	2.1.4.05.011	Arm_Return Left	1	██████████
8	3.6.01.011	Spring_Return Right	1	██████████
9	2.1.4.05.012	Arm_Return Right	1	██████████
10	2.1.4.05.001	Rod_Front	1	██████████
11	2.1.4.05.002	Rod_Rear	1	██████████

**6. Electrical Wiring Diagram and Components**



**6. Electrical Wiring Diagram and Components**

Item	Part Number	Description	Qty.	Unit Price
M1	3.3.01.05.003	Beater Motor_900W_220/60/1	2	██████████
M2	3.2.01.02.033	Compressor_Cylinder	1	██████████
M3	3.2.03.04.001	Main Fan Motor	1	██████████
M4	3.2.01.01.002	Compressor_Hopper	1	██████████
M5	3.2.03.01.001	Fan Motor_Hopper Condenser	1	██████████
M6	3.3.01.01.006	Agitator Motor	1	██████████
D	3.2.04.04.015	Coil_Solenoid_220V/8W	2	██████████
JR	3.1.01.02.011	Thermal Overload Relay_4.5-6.3A	2	██████████
KM	3.1.01.01.010	Contactora_220V	2	██████████
T	3.1.01.04.007	Transformer	2	██████████
TH	3.1.02.13.020	Thermostat PT100	4	██████████
PC1	2.2.1.01.0007	Power Board_V2.152	2	██████████
PC2	2.2.1.01.0004	Microprocessor Control Board_V2.152	2	██████████
S1/S2	3.2.04.06.004	Pressure Switch_Auto Reset_350-500psi	3	██████████
S3	3.1.03.03.003	Power Switch_KCD2_2-Position	2	██████████
S4	3.1.03.01.004	Switch_Draw_KW-7-9	2	██████████
S5	3.1.03.04.009	Mix Low Sensor	2	██████████
F	3.1.02.08.002	Fuse_Transformer_0.5A	2	██████████

**7. Accessories**

Item	Part Number	Description	Qty.	Unit Price
1	3.7.15.002	Lubricant	1	██████████
2	3.4.07.01.002	Tool_Oring Removal	1	██████████
3	8.1.04.001	Tune up kit_6235	1	██████████
4	3.7.24.001	Brush_Large_White	1	██████████
5	3.7.24.002	Brush_φ25×70 White	1	██████████
		Brush_φ38×80 White	1	██████████
		Brush_φ25×60 Black	1	██████████
		Brush_φ3×25 White	1	██████████
		Brush_φ10×25 Double	1	██████████
		Brush_φ13×77 White	1	██████████
6	3.7.25.001	Pail	1	██████████
7	2.3.4.34.009	Air Chute	1	██████████
8	2.3.4.13.029	Panel_Rear_for Air Chute	1	██████████