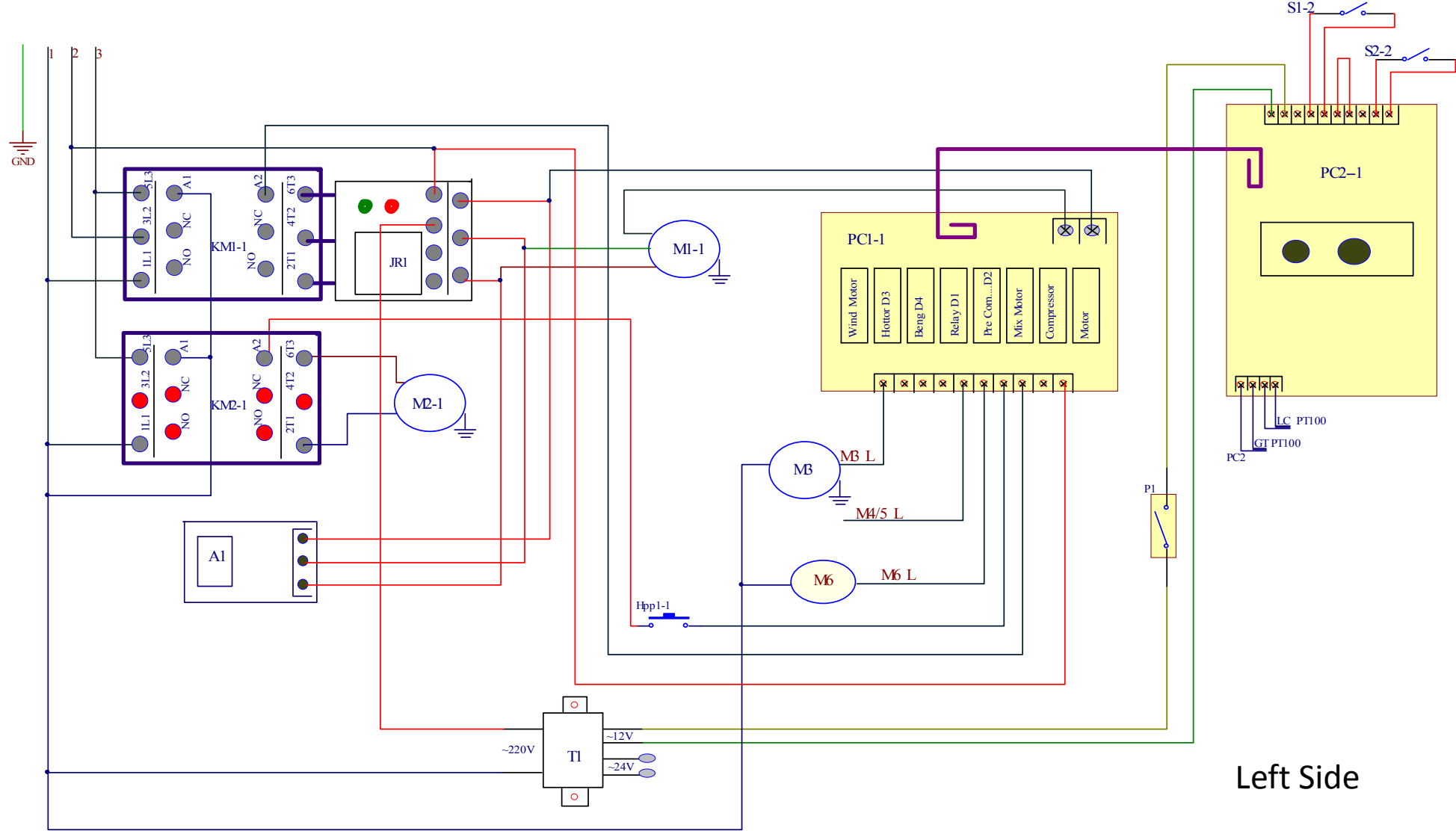


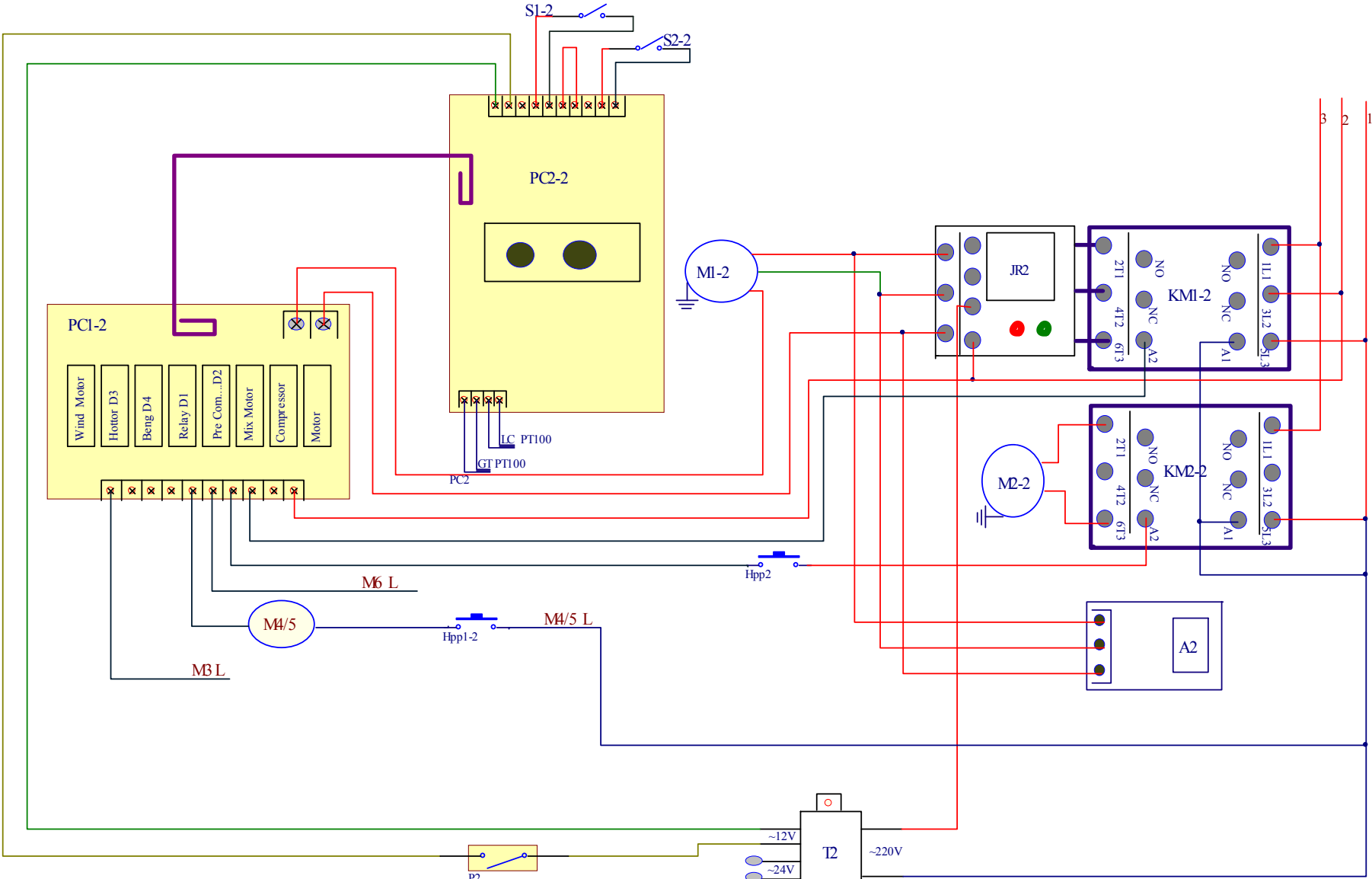
# SPARE PARTS LIST MODEL 6378

## 1. Electrical Drawing and Components



Left Side

# SPARE PARTS LIST MODEL 6378



Right Side

# SPARE PARTS LIST MODEL 6378

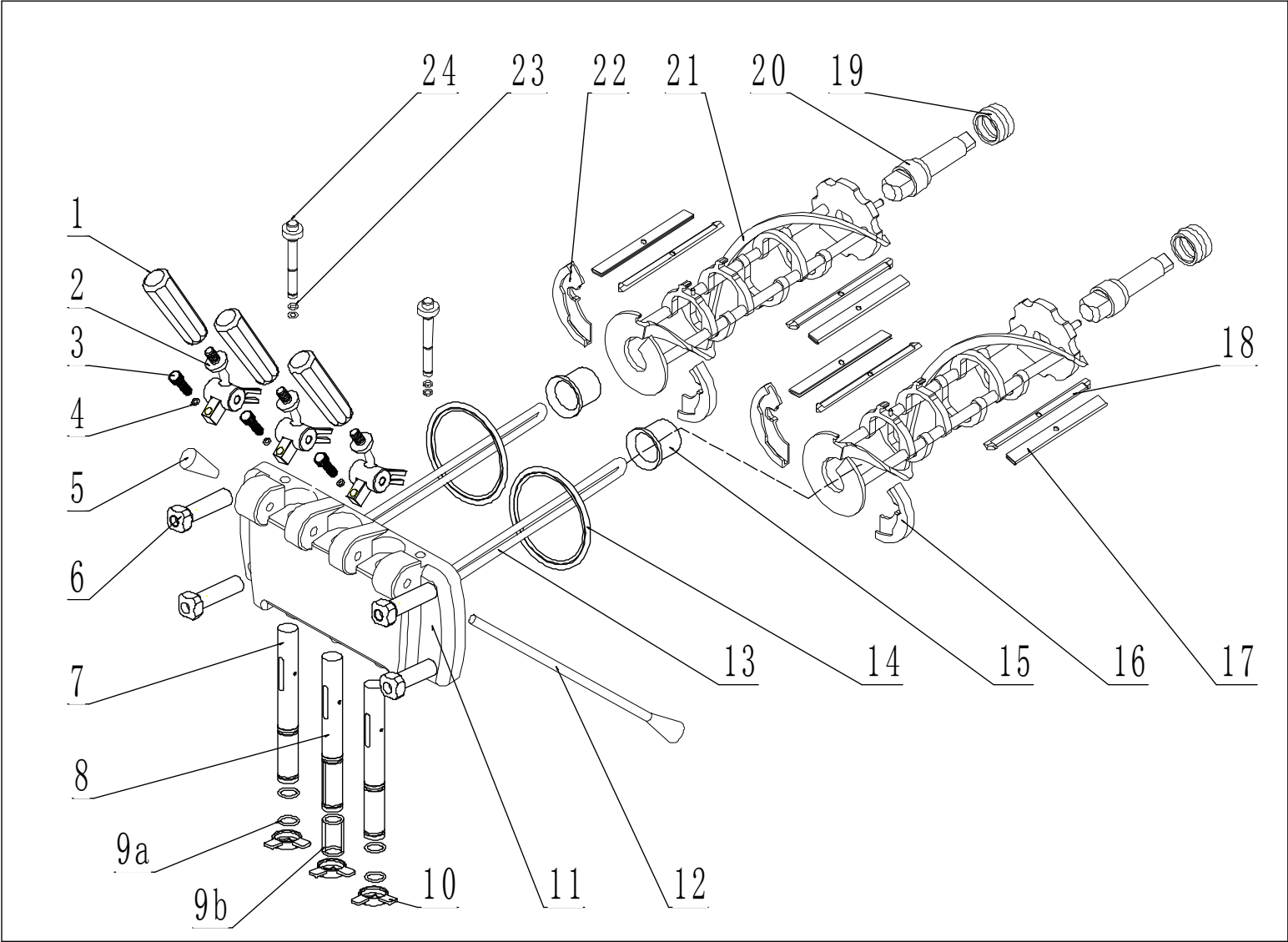
---

## 1. Electrical Drawing and Components

Item	New Part #	QTY.	Description	
M1	3.3.01.04.001	2	Motor – Driven 750W/50HZ/3PH	
M2	3.2.01.02.007	2	Compressor - TAJ2464	
M3	3.2.03.04.001	1	Main Fan Motor	
M4	3.2.01.01.001	1	Compressor – Mix	
M5	3.2.03.01.001	1	Fan Motor - Mix	
M6	2.1.1.12.0002	1	Agitator Motor	
Hpp1	3.2.04.06.004	2	Pressure Switch – Main Compressor	
Hpp2	3.2.04.06.003	2	Pressure Switch – Mix Compressor	
KM1	3.1.01.01.010	2	Contactora of Motor	
KM2	3.1.01.01.010	2	Contactora of Compressor	
T	3.1.01.04.005	1	Transformer	
JR	3.1.01.02.010	2	Thermal Overload Relay	
PC1	2.2.1.01.0007	2	Power Board	
PC2	2.2.1.01.0004	2	Microprocessor Control Board	
S2	3.1.03.04.009	2	Indicator “Mix Low”	
S1	3.1.03.01.004	2	Switch - Draw	
GT/LC	3.1.02.13.020	4	Thermostat PT100	
F	3.1.02.08.002	2	Fuse	
A	3.1.01.05.002	2	Arc Deflector	

# SPARE PARTS LIST MODEL 6378

## 2. Dispensing Door and Beater



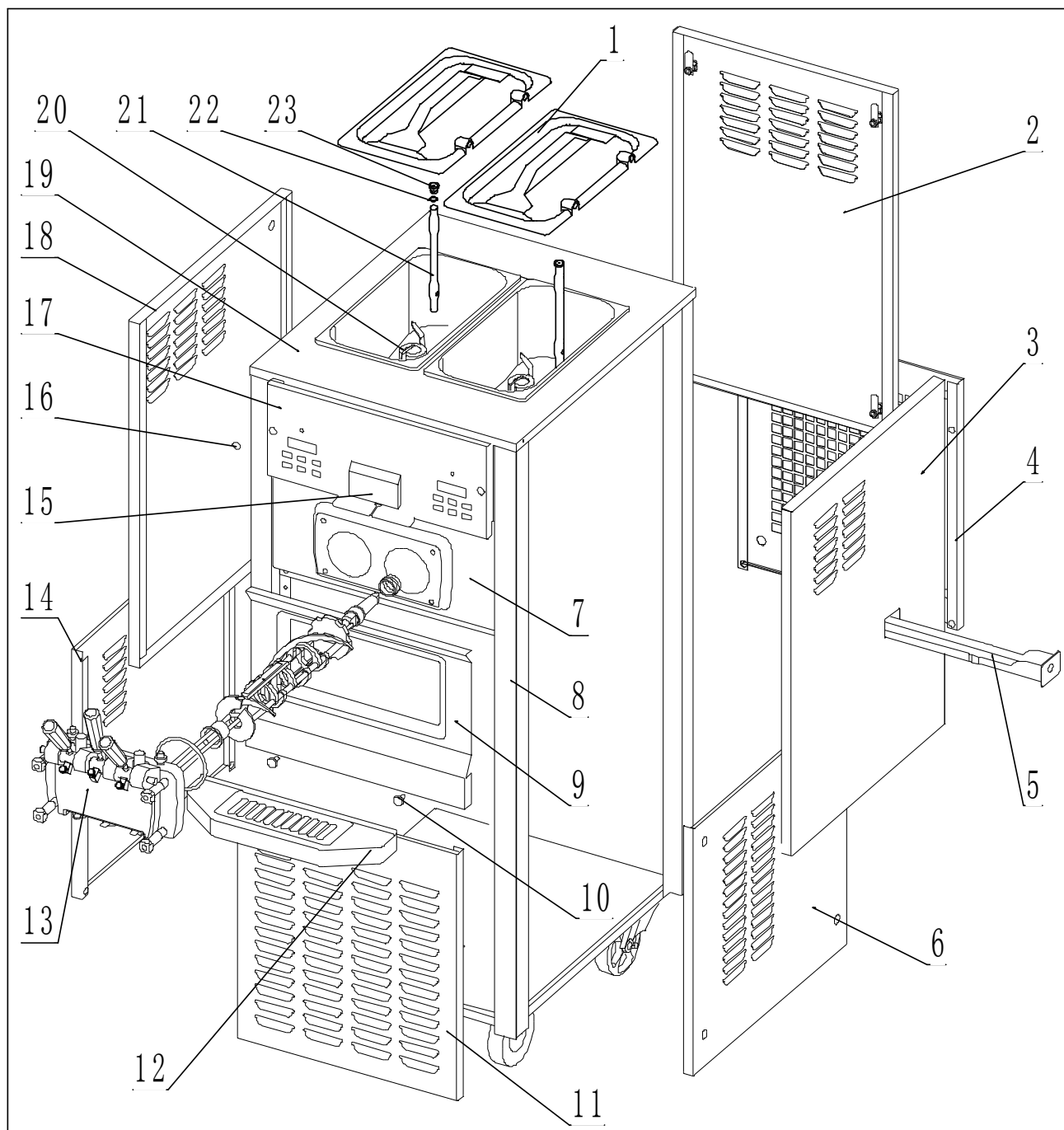
## SPARE PARTS LIST MODEL 6378

### 2. Dispensing Door and Beater

Item	New Part #	QTY.	Description	
1	3.4.05.01.001	3	Dispensing handle	
2	2.1.3.26.0002	3	Dispensing Handle Seat	
3	3.6.39.008	3	Screw - Handle	
4	3.4.08.01.012	3	O-ring $\varnothing 3 \times 1.5$	
5	2.1.3.27.0025	2	Retention nut	
6	2.1.3.32.0002	4	Attaching nuts	
7	2.1.3.01.0005	2	Draw Valve - Side	
8	2.1.3.02.0002	1	Draw Valve - Middle	
9a	3.4.08.01.006	4	Seal – Side Draw valve	
9b	3.4.08.01.015	1	Seal - Middle Draw Valve	
10	3.4.05.03.001	3	Design Cap	
11	2.1.3.14.0005	1	Dispensing door	
12	2.1.3.27.0003	1	Dispensing retention	
13	2.1.1.11.0002	2	Beater rod	
14	3.4.08.02.003	2	Seal of dispensing door	
15	3.4.01.03.002	2	Front bearing	
16	3.4.01.02.001	2	Shoe-Right	
17	3.4.02.01.001	4	Clip-Scraper	
18	2.3.4.04.002	4	Blade-Scraper-Plastic	
19	3.4.07.05.002	2	Seal - Rear Shell Bearing 28x38x22	
20	2.1.3.25.0002	2	Beater Drive Shaft	
21	2.1.1.10.0001	2	Beater	
22	3.4.01.01.001	2	Shoe-Left	
23	3.4.08.01.013	4	O-ring - Plug-Prime $\varnothing 9 \times 1.9$	
24	2.1.3.02.0015	2	Plug-Prime	

# SPARE PARTS LIST MODEL 6378

## 3. Final Assembly



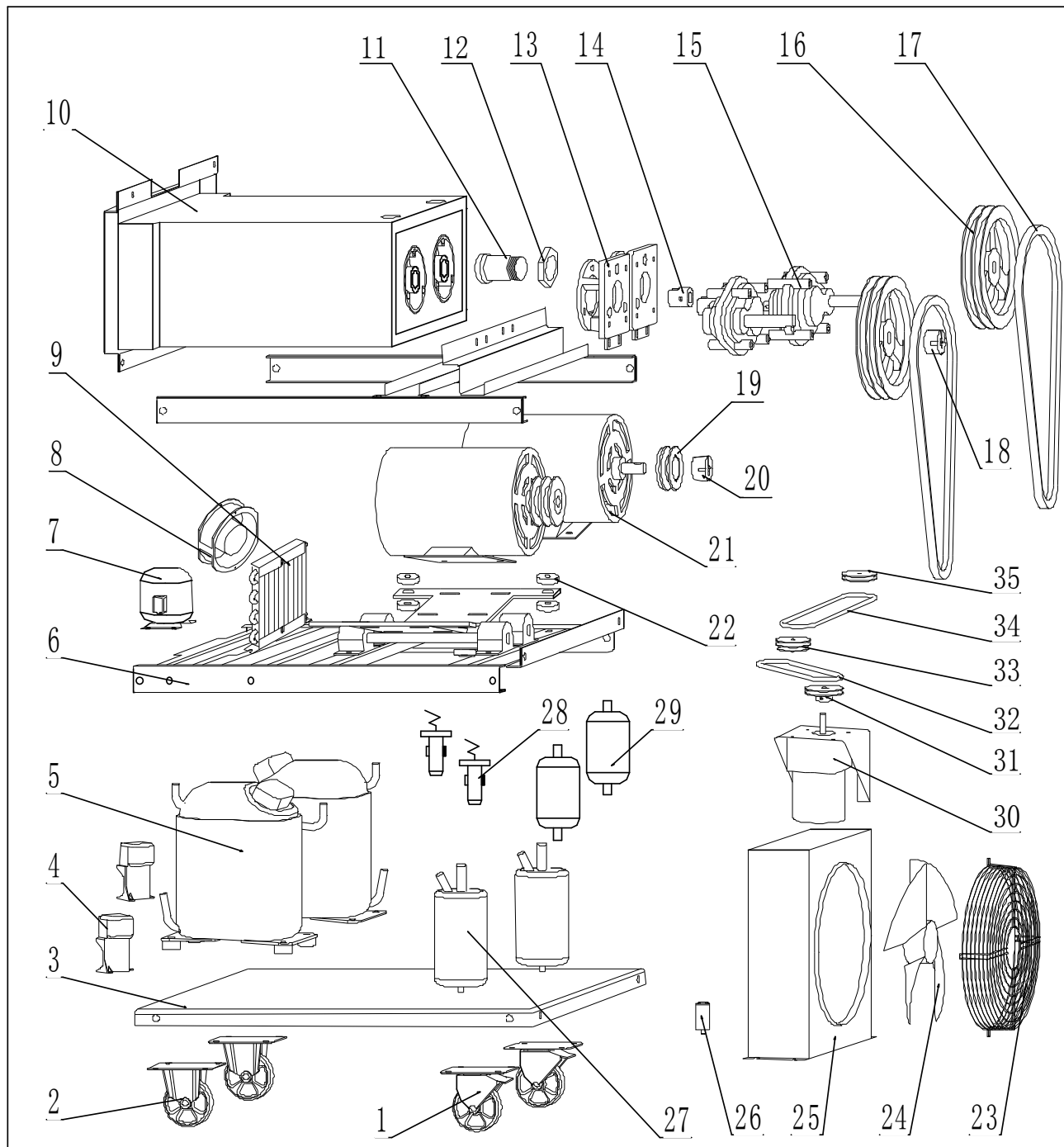
# SPARE PARTS LIST MODEL 6378

## 3. Final Assembly

Item	New Part #	QTY.	Description	
1	3.4.03.01.004	2	Top Cover	
2	2.3.4.14.003	1	Panel - Upper Rear	
3	2.3.4.21.003	1	Panel - Upper Right	
4	2.3.4.15.003	1	Panel - Lower Rear	
5	3.4.04.02.001	1	Rear Drip Tray	
6	2.3.4.22.003	1	Panel - Lower Right	
7	2.1.1.06.0014	1	Cylinder Assembly	
8	2.3.4.09.008	4	Pillar	
9	2.3.4.16.004	1	Panel - Middle Front	
10	3.6.39.004	2	Bolt	
11	2.3.4.15.003	1	Panel - Lower Front	
12	3.4.04.01.003	1	Drip Pan	
13	2.1.1.15.0005	1	Dispensing Door Assembly	
14	2.3.4.22.003	1	Panel - Left Right	
15	3.4.07.07.004	1	Cover of Spigot Switch	
16	3.4.07.01.001	6	Clasp	
17	2.3.4.07.008	1	Panel - Upper Front	
18	2.3.4.19.003	1	Panel -Upper Left	
19	2.1.1.03.0003	1	Hopper Assembly	
20	2.1.1.12.0002	2	Blade - Agitator	
21	2.1.3.39.0004	2	Feed Tube	
22	3.4.08.01.008	2	Seal - Plug of Flowing Tube	
23	2.1.3.23.0002	2	Plug - Feed Tube	

# SPARE PARTS LIST MODEL 6378

## 4. Interior



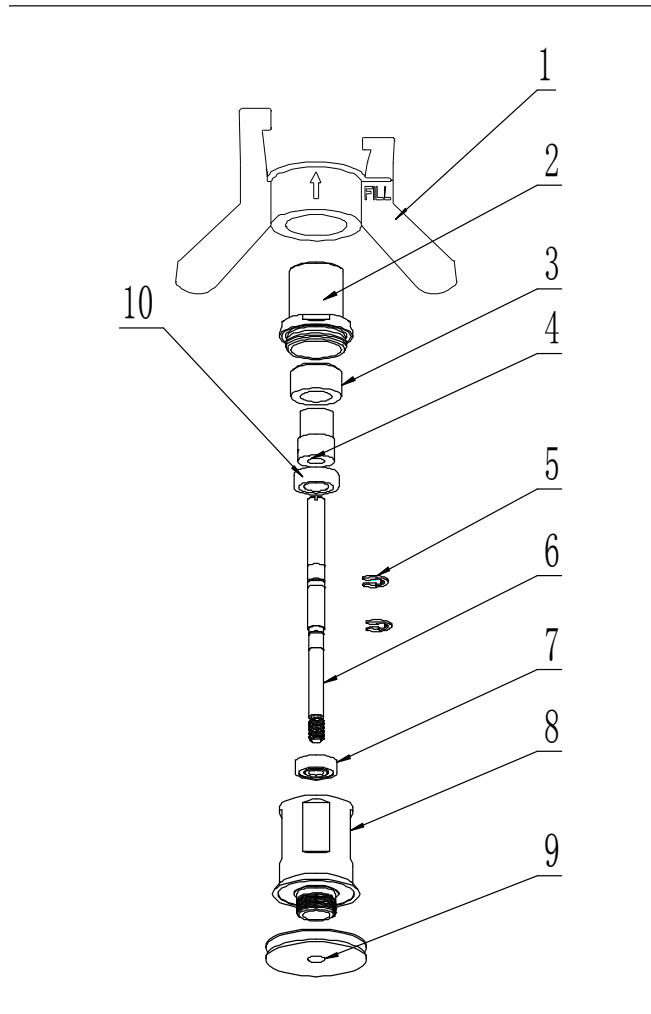
# SPARE PARTS LIST MODEL 6378

## 4. Interior

Item	New Part #	QTY.	Description	
1	3.3.05.02.002	2	Caster- Swivel	
2	3.3.05.01.002	2	Caster- Fixed	
3	2.2.4.01.0011	1	Chassis	
4	3.2.01.04.003	2	Accessories – Compressor	
5	3.2.01.02.007	2	Compressor - TAJ2464	
6	2.2.4.10.0041	2	Crossbeam - motor	
7	3.2.01.01.001	1	Compressor – Mix	
8	3.2.03.01.001	1	Fan Motor - Mix	
9	3.2.02.01.001	1	Condenser – Mix	
10	2.1.1.06.0014	1	Cylinder Assembly	
11	3.3.02.02.002	2	Rear Shell Bearing - Cylinder	
12	3.3.02.02.010	2	Nut – Rear Shell Bearing	
13	2.1.3.15.0003	2	Mount – Gear Box	
14	3.3.02.04.002	2	Coupling – Drive	
15	3.3.02.01.002	2	Gear box	
16	3.3.04.02.007	2	Pulley - Gear box	
17	3.3.01.03.013	4	Belt – Beater Motor	
18	3.3.04.01.005	2	Bush - pulley gear box	
19	3.3.04.02.001	2	Pulley - Motor	
20	3.3.04.01.005	2	Bushing - pulley motor	
21	3.3.01.07.006	2	Motor – Driven 750W/60HZ	
22	3.4.08.04.002	8	Rubber Gasket	
23	3.2.03.04.001-1	1	Fan motor cover	
24	3.2.03.04.001	1	Fan Motor - Main	
25	3.2.02.01.010	1	Main Condenser	
26	3.2.03.04.001-2	1	Capacitor -Fan motor main	
27	3.2.04.08.001	2	Liquid receiver	
28	3.2.04.01.001	2	Thermostatic Expansion Valve	
29	3.2.04.05.002	2	Filter Dryer – Main	
30	3.3.01.01.001	1	Agitator Motor	
31	3.3.04.04.003	1	Pulley - Agitator Motor	
32	2.1.4.02.013	1	Belt – PU – Agitator - Motor	
33	2.1.4.02.004	1	Pulley – Agitator Double	
34	2.1.4.02.013	1	Belt – PU – Agitator - Agitator	
35	2.1.4.02.006	1	Pulley – Agitator Single	

# SPARE PARTS LIST MODEL 6378

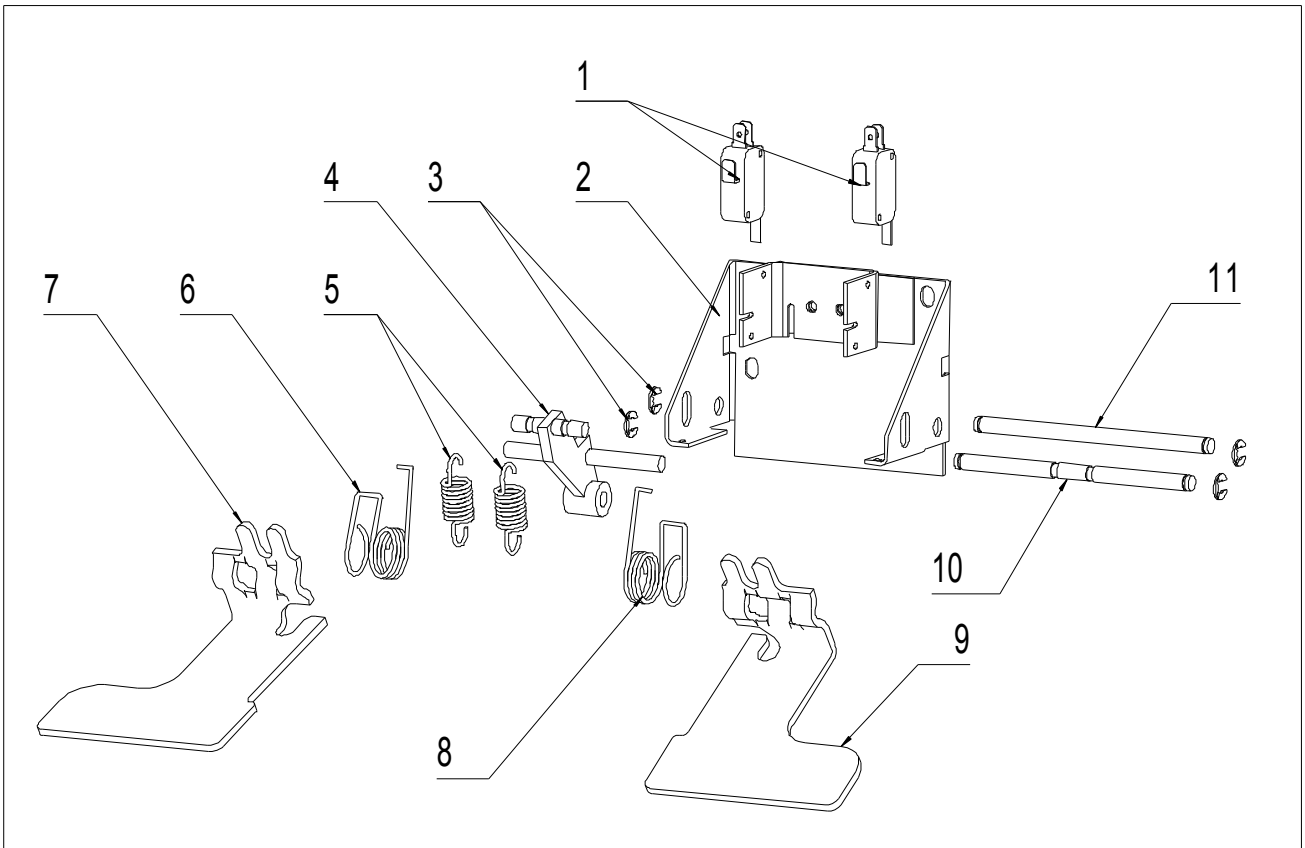
## 5. Agitator



Item	New Part #	Description	Qty.	
1	2.1.4.02.012	Blade - Agitator	2	
2	2.1.4.02.005	Cap – Drive Shaft Housing	2	
3	2.1.4.02.010	Magnet	2	
4	2.1.4.02.003	Shaft – Magnet	2	
5	3.6.34.003	Lock Ring	4	
6	2.1.4.02.009	Shaft - Spin	2	
7	3.3.02.07.004	Bearing - Lower	2	
8	2.1.4.02.001	Drive Shaft Housing	2	
9	2.1.4.02.006	Pulley - Agitator	1	
10	3.3.02.07.003	Bearing - Upper	2	

# SPARE PARTS LIST MODEL 6378

## 6. Draw Switch



Item	New Part #	Description	Qty.	
1	3.1.03.01.004	Switch - Draw	2	
2	2.1.1.19.0010	Bracket – Draw Switch	1	
3	3.6.34.002	Lock Ring	4	
4	2.1.1.19.0006	Frame - Spring	1	
5	3.6.02.002	Spring	2	
6	3.6.01.002	Spring - Return Left	1	
7	2.1.4.05.011	Arm - Return Left	1	
8	3.6.01.012	Spring - Return Right	1	
9	2.1.4.05.012	Arm - Return Right	1	
10	2.1.4.05.001	Rod – Front	1	
11	2.1.4.05.002	Rod - Rear	1	

## SPARE PARTS LIST MODEL 6378

---

### 7. Accessories

Item	New Part #	Description	Qty.	
1	3.7.15.001	Lubricant	1	
2	3.4.07.01.002	Tool - O-Ring Removal	1	
3	Kit-6378	Tune up Kit	1	
4	Sanitize	Sanitize Powder (200 Pcs)	1	
5	3.7.24.001	Brush – White (Optional)	1	
6	3.7.24.002	Brush - $\phi$ 25×70 White (Optional)	1	
		Brush - $\phi$ 38×80 White (Optional)	1	
		Brush - $\phi$ 25×60 Black (Optional)	1	
		Brush - $\phi$ 3×25 White (Optional)	1	
		Brush - $\phi$ 10×25 Double (Optional)	1	
		Brush - $\phi$ 13×77 White (Optional)	1	
7	2.3.4.34.002	Air Chute (Optional)	1	
8	3.7.25.001	Pail (Optional)	1	